

Pier Pavilion

A spectacular public landmark is coming to Watermans Cove, Barangaroo. Pier Pavilion will be a place where people can shelter, meet, gather, and relax by the water, or enjoy a range of temporary, programmed events.

Read on for information regarding the project, including start of works and upcoming activities, and contact details.

Project overview

In 2020, Infrastructure NSW held a national competition, to design an iconic landmark public pavilion on Barangaroo's foreshore. Over 170 entries from architects across Australia were received. The winning design is by architects Jessica Spresser and Peter Besley, and the design celebrates elements that surround the site: land, sea, and sky.

It is designed as a gathering space under a landscaped canopy and acts as a sheltered meeting place, a site for events, and a memorable part of the city.

Early works occurred in 2022 to prepare the substructure for the pavilion. Work to construct the main structure will begin next month.



Artist impression of the new Pier Pavilion (view from Watermans Cove)

Design features

- A triangular shape with curved sides that align to surrounding coves.
- A landscaped green roof that:
 - incorporates a 7-metre diameter oculus,
 - is covered with native plants species to attract birds, bees and other species,
 - includes plants, logs, and sandstones to provide habitat shelter for small fauna.
- 'Oyster terrazzo' clad elements made of terrazzo mixed with Sydney rock oyster shells sourced from the east coast and recycled from Barangaroo restaurants.

Start of works

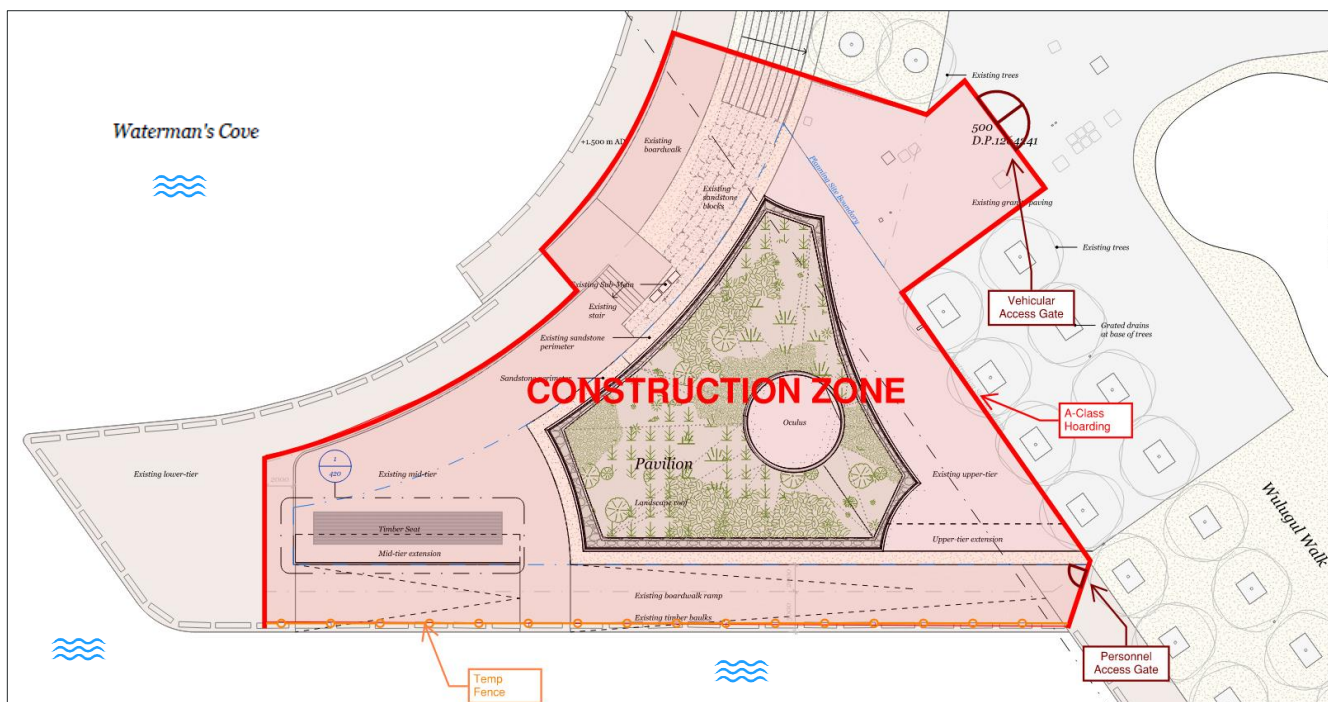
Works are expected to commence in mid-March (weather permitting). Infrastructure NSW will work closely with Stephen Edwards Constructions to manage the construction program and minimise the impact of construction on neighbouring properties, residents, and businesses.

Construction will occur in 8 phases:

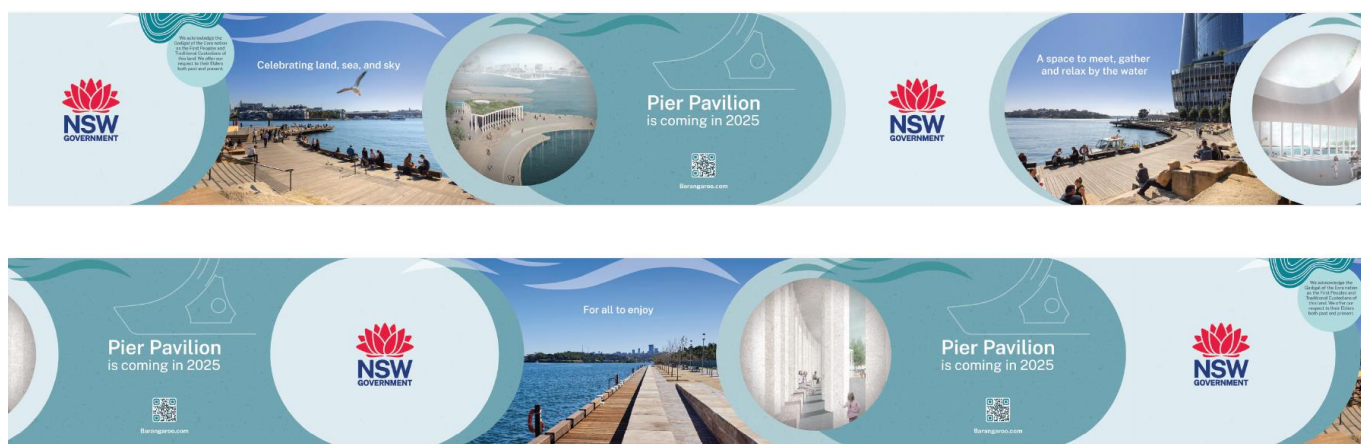
1. Site establishment, installing the perimeter hoarding and erecting tree protection
2. Installing supporting structure and columns
3. Roof installation
4. Roof landscaping
5. Terrazzo cladding
6. Internal fit out including services reticulation
7. Site testing and commissioning
8. Site demobilisation.

Hoarding installation and design

In mid-March, construction will begin with hoarding installation around the perimeter of the construction site (marked in **red** on the map below). The hoarding will be made of timber and provides public safety and site security. Due to spatial constraints, along the southern perimeter temporary fencing with wind-rated mesh hoarding banners will be installed (marked **orange**).



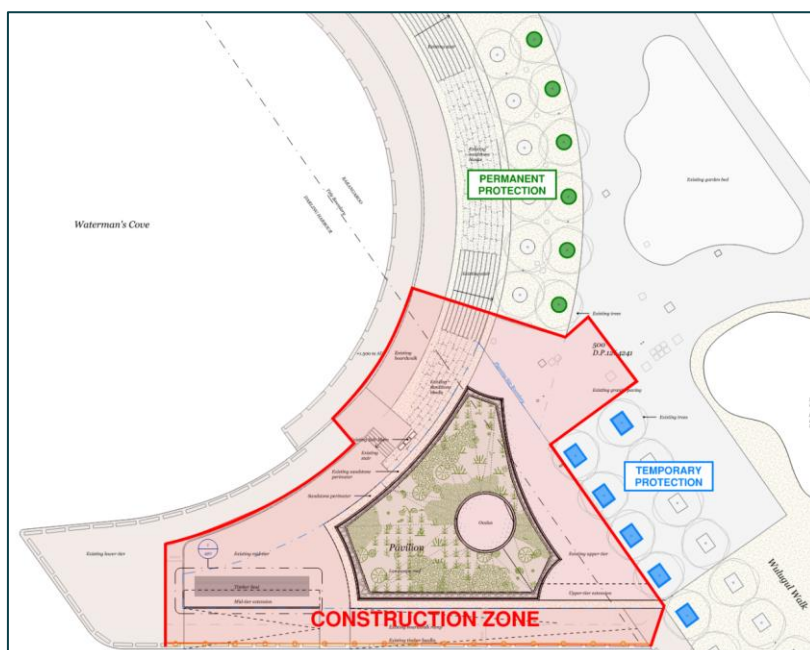
The timber hoarding will include a graphically designed artwork, inspired by the above-mentioned land, sea, and sky. The design adheres to NSW Government branding guidelines and communicates what is being delivered. It will create a positive, engaging experience for local businesses and visitors, in keeping with the character of the area.



Tree protection

Nearby trees will be protected during construction in accordance with the project's Conditions of Consent. To minimise the visual presence of tree protection, some protection will only be installed for a short amount of time. Tree protection will be installed and removed as follows:

- Tree protection will be installed for a total of 12 trees marked in **blue** and **green** while the site perimeter hoarding is erected.
- Six trees located in front of the nearby garden bed (marked **green**) will have tree protection in place for the duration of the construction works.
- Six trees located in front of the adjacent building (marked **blue**) will have their tree protection removed following the completion of hoarding installation.



Upcoming activities

Activity	What to expect
Installing hoarding and tree protection	<ul style="list-style-type: none"> • Temporary fence and tree protection will be erected before hoarding works commence. • Temporary fence erection will be managed by SEC spotters/pedestrian controllers. • Hoarding works will be relatively low noise and occur behind the temporary fence. • Trucks with integrated truck mounted cranes will unload behind fence line. The temporary fence will be progressively removed as hoarding progresses. • Vinyl banner to be fixed to finished hoarding. Hoardings will be braced to withstand wind loads.
Site establishment	<ul style="list-style-type: none"> • Delivery of construction site compound/temporary facility equipment. • A mobile crane will be used to lift site sheds into position.
Demolition works	<ul style="list-style-type: none"> • Pavers will be removed using 5t excavator(s) plus bobcat or similar with hammer and bucket attachments. Hammer work will be high noise and will not occur during respite periods. • Waste will be bucketed into skip bins located within site hoarding and picked up by trucks entering via loading zone (approx. 6 trucks per day). • Sandstone blocks north of the Pavilion will require some modifications to their finished heights, using a wet saw. • A portion of the existing board walk will need to be removed. This work will occur predominantly with cordless impact drills and plug-in drills that produce low noise. Materials may be removed with an electric forklift or via manual handling. • Dust suppression will be employed for all activities as required.

Working hours

Construction will occur during standard City of Sydney construction hours, included below. An extended respite period from high noise works will be in place between 12pm and 2pm.

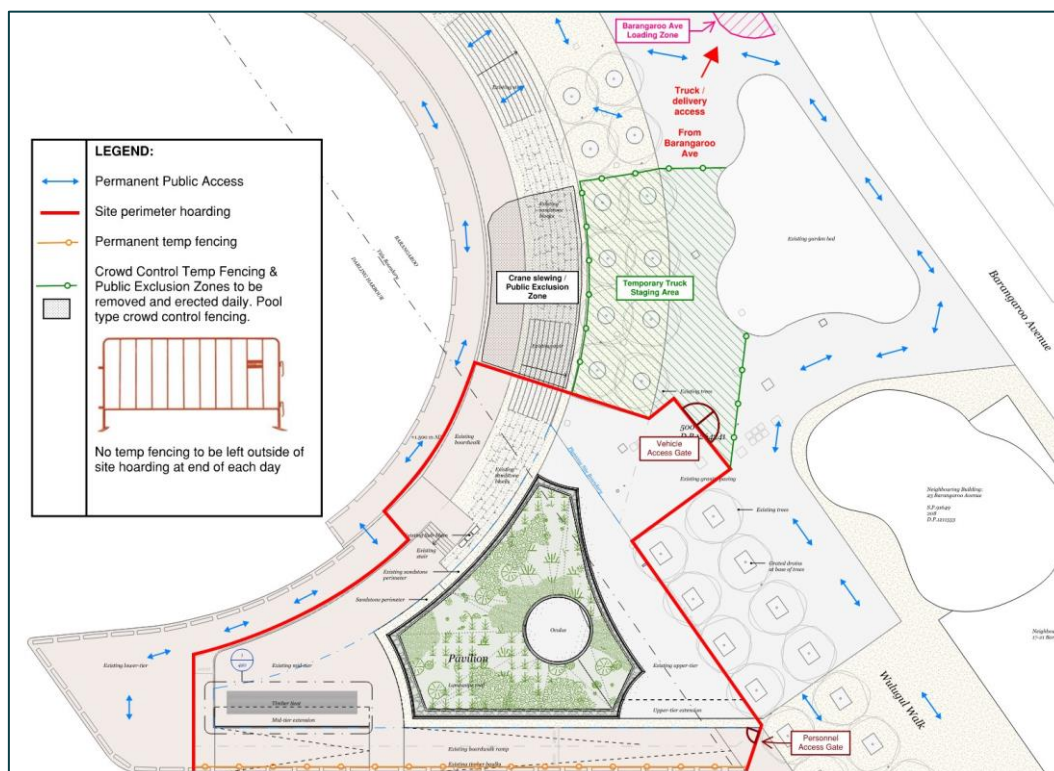
Any works outside of these normal construction hours will be subject to the relevant authority approvals and communicated with stakeholders in advance.

Day	Hours of work
Monday to Friday	7.30am - 5.30pm. High noise emission appliances, plant and/or machinery will not be used between 12pm - 2pm
Saturday	7.30am - 3.30pm. High noise emission appliances, plant and/or machinery will not be used before 9:30am or after 1:30pm
Sunday or public holidays	No work is permitted on Sundays or public holidays.

Vehicle movements and managing public safety

Throughout construction, heavy vehicles will be required to access the site to deliver construction materials. The frequency of deliveries will vary depending on the stage of works. There will be intermittent impacts to pedestrian movements through the area as delivery trucks arrive on site. To manage public safety during these deliveries, vehicle escorts will be onsite to manage pedestrian and vehicle movements. Additionally, there will be signage and barriers to assist the public.

Due to site restrictions and the need for cranes to move large items around site (e.g. establishing site compounds, moving structural steel, cross laminated timber, etc.) additional exclusion zones and pedestrian route changes will be necessary to maintain public safety. The map below reflects the layout and is anticipated for end April to July 2024:



Learn more

- Pier Pavilion [webpage](#)
- Noticeboard for [Community and neighbours](#) updated with construction updates, where required
- For Barangaroo development updates, [subscribe](#) to the mailing list

Contact us

We are committed to keeping you informed and regular updates will be provided.

Contact us for construction related questions, feedback or complaints:



+61 2 9216 5700



barangaroo.info@infrastructure.nsw.gov.au



barangaroo.com