

Project update

October 2024

Pier Pavilion, Watermans Cove

A spectacular public landmark is coming. Pier Pavilion will be a stunning public space where people can shelter, meet, gather and relax by the water. Infrastructure NSW has engaged Stephen Edwards Constructions (SEC) to deliver the works.

Works update

Construction is progressing, with ongoing installation of the terrazzo oyster concrete façade. The new submains were successfully reticulated on 30 September. A new timber seat at the pier's end has been installed.

Upcoming works

Over the coming weeks, SEC is:

- Finalising ceiling framing works to the main Pavilion roof and starting terrazzo ceiling installation
- Continuing internal sheeting and fit-out within the Cella
- Continuing to install the terrazzo oyster concrete cladding, which includes starting works for the remaining building elements, namely the oculus, curved seating and Cella
- Commissioning and testing progressive service trades.



New timber seat at the pier's end



Hoarding adjustments

SEC will need to make a minor adjustment to extend the hoarding perimeter. This is required to install sandstone paving up to the Wulugul Walk trees.

The minor expansion (detailed in blue in the diagram) is scheduled to be installed on 11 November 2024 (weather permitting) and will remain in place for the duration of works.

Construction hours

Construction will continue during standard City of Sydney construction hours, with an extended respite period from high noise emission appliances. Other plant and machinery will continue during those hours.

Day	Hours of work
Monday to Friday	7.30am - 5.30pm. Respite period: High noise emission appliances*, plant and/or machinery will not be used between 12pm and 2pm.
Saturday	7.30am - 3.30pm. Respite period: High noise emission appliances*, plant and/or machinery will not be used before 9:30am or after 12pm.

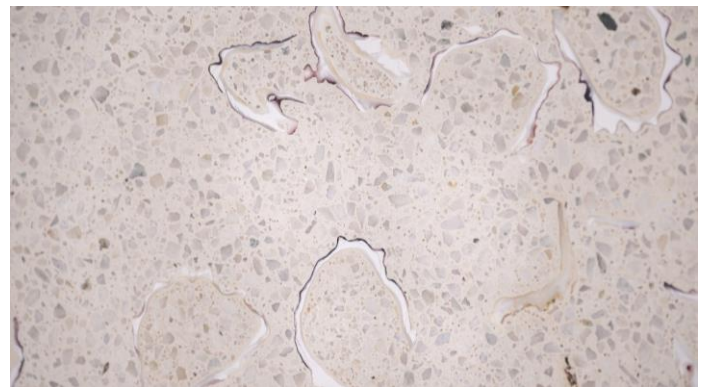
*High noise emission appliances include machinery such as piledrivers, rock breakers and hydraulic hammers.

Did you know?

Over 450,000 recycled Sydney Rock oysters will be used in the construction of the terrazzo oyster concrete façade. These will be visible on all surfaces of the completed Pavilion.



Terrazzo oyster concrete façade installation



Close up of the oyster shell terrazzo

Contact us

We are committed to keeping you informed and regular updates will be provided.

Contact us for construction-related questions, feedback or complaints:

 1800 679 121
  barangaroo.info@infrastructure.nsw.gov.au
 barangaroo.com

For development and construction updates, [subscribe](#) to the Barangaroo mailing list.

If you need an interpreter, please call Translating and Interpreting Service (TIS) National on 13 14 50 and ask them to call Infrastructure NSW on 1800 679 121 (between 8:30am – 5pm)