

Project update

February 2025

Pier Pavilion, Watermans Cove

A spectacular public landmark is coming. Pier Pavilion will be a stunning public space where people can shelter, meet, gather and relax by the water. Infrastructure NSW has engaged Stephen Edwards Constructions (SEC) to deliver the works.

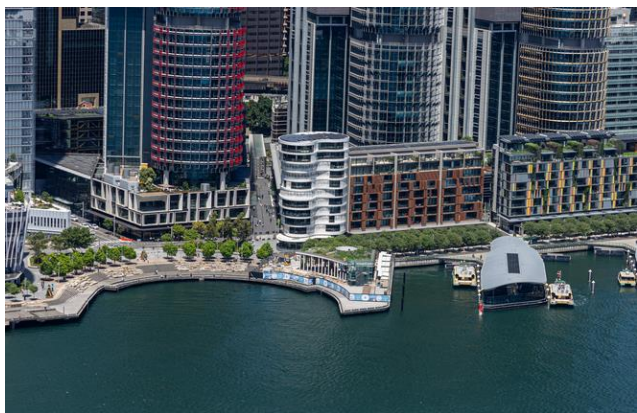
Works update

Major progress has been made this year on the Pier Pavilion. Last year we saw milestones including completion of the green roof and installation of almost 2,500 plants with 19 species, install of a deck extension, install of a 14-metre long hardwood timber seat and the start of customer oyster terrazzo facade install.

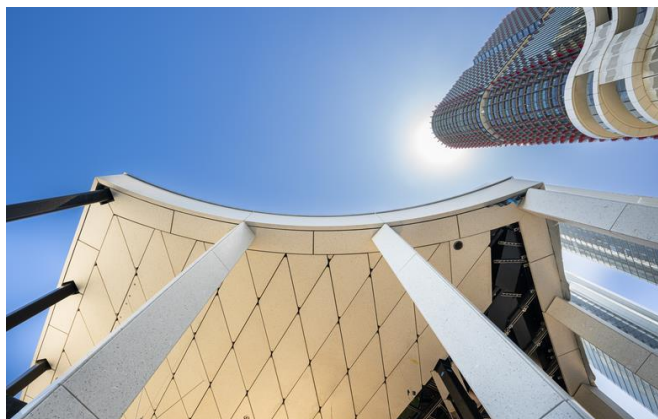
Upcoming works

Over the coming weeks, leading up to the end of construction, SEC will:

- Continue to install terrazzo oyster concrete cladding, including ceiling panels, column cladding, the Cella façade, and its curved seating.
- Carry out fitting off (installing and connecting final fixtures and fittings).
- Laying of Granite and sandstone paving.
- Progressively commission and testing of services.
- Progressive Cleaning and Defect rectification.



Aerial view of Pier Pavilion's landscaped rooftop



Install of terrazzo oyster concrete cladding, including the ceiling

Construction hours

Construction will continue during standard construction hours, included on the next page.




Day	Hours of work
Monday to Friday	7.30am - 5.30pm. Respite period: High noise emission appliances*, plant and/or machinery will not be used between 12pm and 2pm.
Saturday	7.30am - 3.30pm. Respite period: High noise emission appliances*, plant and/or machinery will not be used before 9:30am or after 12pm.

*High noise emission appliances include machinery such as piledrivers, rock breakers and hydraulic hammers.

Contact us

We are committed to keeping you informed and regular updates will be provided.

Contact us for construction-related questions, feedback or complaints:

 1800 679 121  barangaroo.info@infrastructure.nsw.gov.au  barangaroo.com

For development and construction updates, [subscribe](#) to the Barangaroo mailing list.

If you need an interpreter, please call Translating and Interpreting Service (TIS) National on 13 14 50 and ask them to call Infrastructure NSW on 1800 679 121 (between 8:30am – 5pm)