

## Project update

December 2024

### Pier Pavilion, Watermans Cove

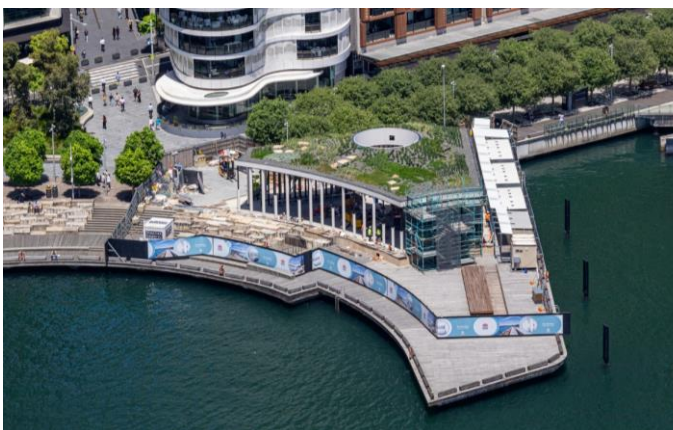
A spectacular public landmark is coming. Pier Pavilion will be a stunning public space where people can shelter, meet, gather and relax by the water. Infrastructure NSW has engaged Stephen Edwards Constructions (SEC) to deliver the works.

## Works update

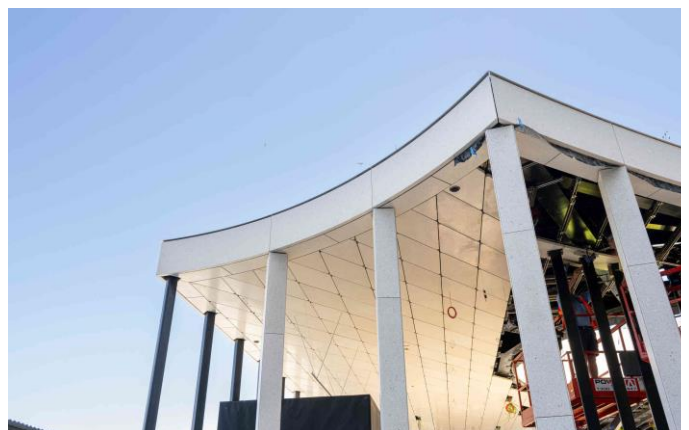
Major progress has been made this year on the Pier Pavilion. The main steel structure has taken shape, and the cross-laminated timber (CLT) roof has been installed. A significant milestone earlier in the year was the installation of the green roof, which features a landscaped garden with 19 plant species. The deck extension is also complete, including a 14-metre-long hardwood timber seat. The installation of the custom oyster terrazzo façade is ongoing, with the Pavilion's façade and oculus now finished. Work is continuing on fitting off and commissioning services.

Over the coming weeks, leading up to the end of the year, SEC will:

- Continue to install terrazzo oyster concrete cladding, including ceiling panels, column cladding, the Cella façade, and its curved seating.
- Complete internal terrazzo and fibre cement wall and floor linings in the Cella.
- Carry out fitting off (installing and connecting final fixtures and fittings).
- Progressively commission and test services.



Aerial view of Pier Pavilion's landscaped rooftop



Install of terrazzo oyster concrete cladding, including the ceiling

## Construction hours

The site will be **closed from Saturday 21 December 2024 and will reopen on Monday 6 January 2025**. Construction will then continue during standard construction hours, included on the next page.

Day	Hours of work
Monday to Friday	<b>7.30am - 5.30pm.</b> Respite period: High noise emission appliances*, plant and/or machinery will <b>not</b> be used between 12pm and 2pm.
Saturday	<b>7.30am - 3.30pm.</b> Respite period: High noise emission appliances*, plant and/or machinery will <b>not</b> be used before 9:30am or after 12pm.

\*High noise emission appliances include machinery such as piledrivers, rock breakers and hydraulic hammers.

## Contact us

We are committed to keeping you informed and regular updates will be provided.

Contact us for construction-related questions, feedback or complaints:

 1800 679 121
  [barangaroo.info@infrastructure.nsw.gov.au](mailto:barangaroo.info@infrastructure.nsw.gov.au)
 [barangaroo.com](http://barangaroo.com)

For development and construction updates, [subscribe](#) to the Barangaroo mailing list.

If you need an interpreter, please call Translating and Interpreting Service (TIS) National on 13 14 50 and ask them to call Infrastructure NSW on 1800 679 121 (between 8:30am – 5pm)