

Project update

August 2024

The Cutaway

The NSW Government is transforming the Cutaway into one of Sydney's premier cultural facilities and an outstanding venue for events, exhibitions, festivals, and installations. FDC Construction has been engaged to carry out the fit-out works, which will span three levels and offer new event, gallery, and education spaces.

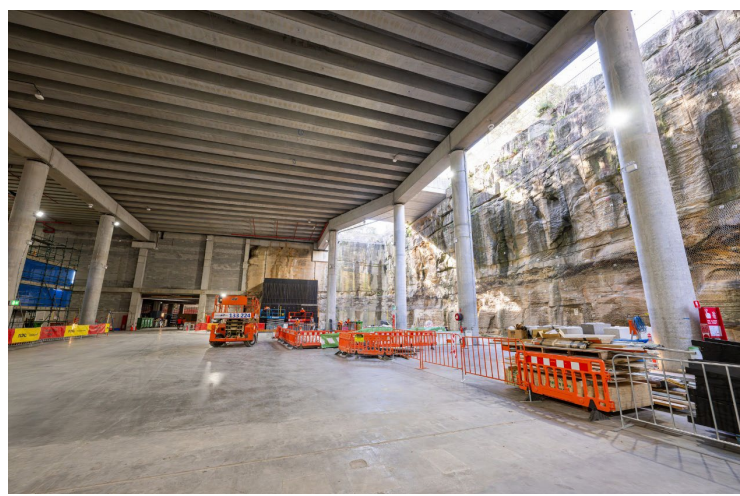
Works update

Demolition work and excavation are underway, allowing construction of the lift well and stairwell structures to progress, including concrete pours. Work in the front entry space has also commenced.

What to expect

In the next few weeks FDC will:

- Continue demolition and excavation.
- Erect scaffolds and catch decks throughout.
- Install services to basement and plantrooms.
- Undertake night works in the carpark.
- Continue concrete construction to lift shafts and stairs.
- Finish construction of perimeter hoardings to Merriman Street.
- Sandstone stabilisation works to existing rockface.
- Prepare for steel install, which is scheduled to start in September.



Above: Progress photo inside the Cutaway

Hours of work

Works will occur during standard construction hours, as below. Any works outside of these hours will be subject to the relevant authority approvals and communicated with stakeholders in advance.

Day	Hours of work
Monday to Friday	7.00am - 6.00pm. Respite period: High noise emission appliances*, plant and/or machinery will not be used before 9am, between 12pm and 2pm, or after 5pm.
Saturday	8.00am – 5.00pm. Respite period: High noise emission appliances*, plant and/or machinery will not be used before 9am or after 12pm.

*High noise emission appliances include machinery such as piledrivers, rock breakers and hydraulic hammers.

Barangaroo



To avoid disrupting daytime traffic and car park operations, night works are scheduled in the carpark from Monday 12 August to Tuesday 10 September 2024, between 8:00pm and 5:00am. Work will be Monday through Friday evenings, finishing Saturday morning. No work will occur Saturday and Sunday evenings. These works comply with the conditions of consent. Noisy activities are expected to fall within acceptable limits and will be scheduled to minimise disturbances. Noise modelling and monitoring will continue, with additional mitigations and acoustic treatments in place.

Minimising community impact

To limit the impact of additional workers in the area and on street parking, workers will be encouraged to use public transport rather than using private vehicles. Project vehicle access and deliveries will be via the Cutaway's loading dock (Towns Place carpark). There may be intermittent periods of high noise works inside the Cutaway. Any high noise work will be limited to 9:00am to 12:00pm and 2:00pm to 5:00pm on weekdays, and limited to 9:00am to 12:00pm on Saturdays.

No access to the Cutaway lift at ground level

The ground level lift at the Cutaway entrance is located within the construction zone. For public safety, the lift is now closed to the ground floor for the duration of works. Other levels remain open as well as the nearby stairs. Please add extra time to your journey. Refer to the map shown on this page for accessible and alternative routes. A buggy service is available to help those with accessibility needs travelling between the Cutaway entrance (Ground level) to/from Stargazer Lawn (Level 2). The buggy operates daily between 9:00am – 3:00pm and leaves Ground level every hour, and quarter past the hour from Level 2.

More information

We are committed to keeping you informed and regular updates will be provided.

For Barangaroo development updates, subscribe to the mailing list at <https://bit.ly/INSW-email-signup>.

Contact our Barangaroo project team via:

1800 161 175

Cutaway_Barangaroo@fdcbuilding.com.au

www.barangaroo.com/future

If you need an interpreter, please call Translating and Interpreting Service (TIS) National on 13 14 50 and ask them to call Infrastructure NSW on 1800 679 121 (between 8:30am – 5pm)



Accessible route changes

The lift at ground level (Cutaway entrance) will not be accessible during the Cutaway fit-out construction. Wheelchair users may use accessible routes as marked on the map.



POPULAR ROUTES

- Accessible routes from Ground level to Level 2 and vice versa
- Access to Munns Reserve from lift at Level 1
- Barangaroo Reserve carpark (underground route):
 - To go to Stargazer Lawn, Merriman Street or Hotel Palisade, exit lift at Level 2
 - To go to Waranara Terrace, Millers Point or Munns Reserve, exit lift at Level 1
 - To go to Marrinawi Cove or Towns Place exit via Level B1 carpark entrance ramp
- Cutaway (Ground level) to Hotel Palisade (Level 2): Use the accessible paths through Barangaroo Reserve headland.
- Barangaroo South to The Rocks: See map below for the lift in Barangaroo South. Use the lift near Wynyard Walk in Exchange Square, turn left onto Kent Street then turn right onto Argyle Street (estimated 20 mins journey).

- Wheelchair accessible paths
- Stairs
- Parking (the carpark is accessible from all levels)
- Lift operating as normal. Access from Carpark to Level 1 and/or Level 2
- Lift can not be entered or exited at ground level (Cutaway entrance)

