

Barangaroo

Works notification

October 2024

The Cutaway

The Cutaway is being transformed by the NSW Government into one of Sydney's premier cultural facilities and an outstanding venue for events, exhibitions, festivals, and installations. FDC Construction has been engaged to carry out the fit-out works, which will span three levels and offer new event, gallery, and education spaces.

Works update

The perimeter hoardings and stabilisation of the sandstone rockface are complete. Steelwork deliveries and construction are progressing to plan. Major concrete pours are scheduled from late October along with demolition of skylight bays on Merriman Street.

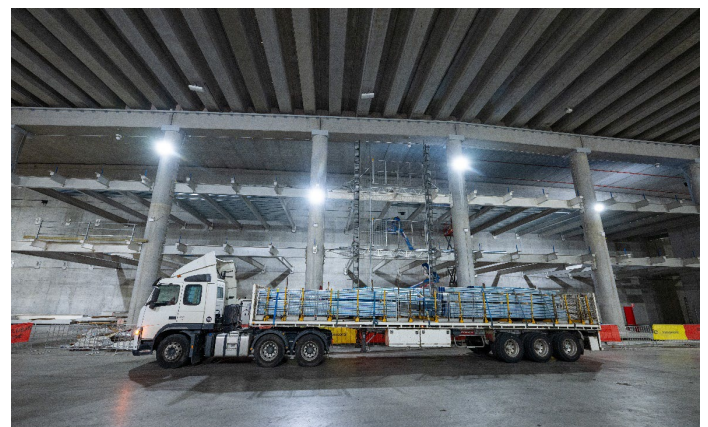
What to expect

In the next few weeks FDC will:

- Undertake electrical works requiring a power outage to the Towns Place car park. These works are required to energise the switchboard and power supplies for the Cutaway. To enable this energisation, **the car park will be closed from 6am Saturday, 2 November to 6am Sunday, 3 November.** Other impacts relating to these electrical works include:
 - isolation of power and lighting internal to the Cutaway and car park
 - isolation of life safety systems internal to the Cutaway and car park
 - isolation of all mechanical and carpark exhaust within the Cutaway and car park
- Continue installation of services to basement and plantrooms
- Continue steel install
- Commence major concrete pours
- Commence general fit-out within the Cutaway
- Commence demolition of skylight bays along Merriman Street, which will require use of jackhammers. Noise levels will be maintained within council restriction of 75DB and respite period of 12:00pm – 2:00pm will be adhered to with works commencing from 9:00am.



Construction activity within the Cutaway



A delivery of steel formwork arriving

Minimising community impact

Workers are encouraged to use public transport rather than using private vehicles. Project vehicle access and deliveries is via the Cutaway's loading dock (Towns Place car park). There may be intermittent periods of high noise works inside the Cutaway. Any high noise work will be limited to 9:00am to 12:00pm and 2:00pm to 5:00pm on weekdays and limited to 9:00am to 12:00pm on Saturdays.

The Cutaway lift is temporarily closed. The ground level lift at the Cutaway entrance is located within the construction zone. For public safety, the lift is now closed to the ground floor for the duration of works. Other levels remain open as well as the nearby stairs. Please add extra time to your journey. A buggy service is available to help those with accessibility needs travelling between the Cutaway entrance (Ground level) to/from Stargazer Lawn (Level 2). The buggy operates daily between 9:00am – 3:00pm and leaves Ground level every hour, and quarter past the hour from Level 2.

Hours of work: Construction hours

Works will occur during standard construction hours, as below.

Day	Hours of work	Respite periods
Monday to Friday	7.00am - 6.00pm	High noise emission appliances*, plant and/or machinery will not be used before 9am, between 12pm and 2pm, or after 5pm.
Saturday	8.00am – 5.00pm	High noise emission appliances*, plant and/or machinery will not be used before 9am or after 12pm.

*High noise emission appliances include machinery such as piledrivers, rock breakers and hydraulic hammers.

Hours of work: Out of hours

All work outside of construction hours are subject to the relevant authority approvals. As per the works notification on 10 October 2024, night works are scheduled in the carpark from **Wednesday 16 October to Tuesday 26 November 2024**, between 8:00pm – 5:00am. Work will be Monday through Friday evenings, finishing Saturday morning. No work will occur Saturday and Sunday evenings. These works are scheduled to avoid disrupting daytime traffic and car park operations, and works comply with the conditions of consent. Noisy activities are planned to fall within approved noise limits and will be scheduled to minimise disturbances. Noise modelling and monitoring will continue with additional acoustic treatments in place where possible.

More information

We are committed to keeping you informed and regular updates will be provided.

For Barangaroo development updates, [subscribe](https://bit.ly/INSW-email-signup) to the mailing list at <https://bit.ly/INSW-email-signup>.

Contact our Barangaroo project team via:



1800 161 175



Cutaway_Barangaroo@fdcbldg.com.au



www.barangaroo.com/future



If you need an interpreter, please call Translating and Interpreting Service (TIS) National on 13 14 50 and ask them to call Infrastructure NSW on 1800 679 121 (between 8:30am – 5pm)