

The Cutaway

The Cutaway is being transformed by the NSW Government into one of Sydney's premier cultural facilities and an outstanding venue for events, exhibitions, festivals, and installations. FDC Construction has been engaged to carry out the fit-out works, which will span three levels and offer new event, gallery, and education spaces.

Works update and upcoming works

Construction is continuing well, with regular deliveries of steelwork and the interior fit out works well underway. Installation of services to basement and plant rooms and major concrete pours have been completed.

Upcoming works include:

- Constructing the interior feature timber “trees” in Germany and transportation to Australia
- Installing acoustic control elements into the event space
- Installing the Harbour Control Tower infill slab
- Installing the steelwork for the skylights
- Fitting out the back-of-house offices and commercial kitchens
- Installing glass reinforced concrete features to the front entry
- Installing the feature staircase
- Completing lift shaft penetrations.

Fun Facts to date

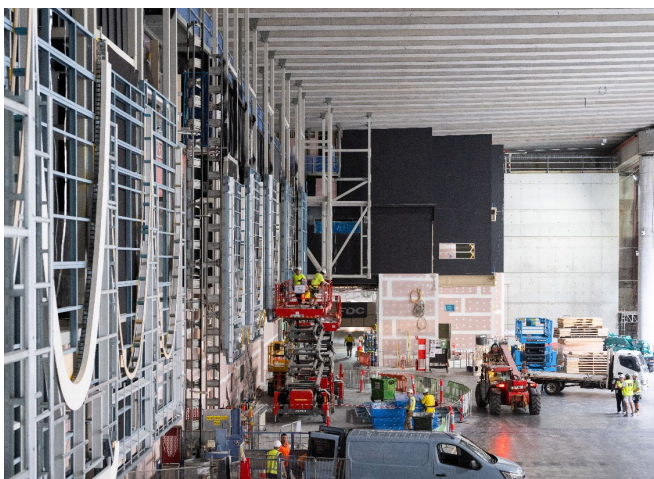
>90% of construction waste diverted from landfill

24km of cable installed

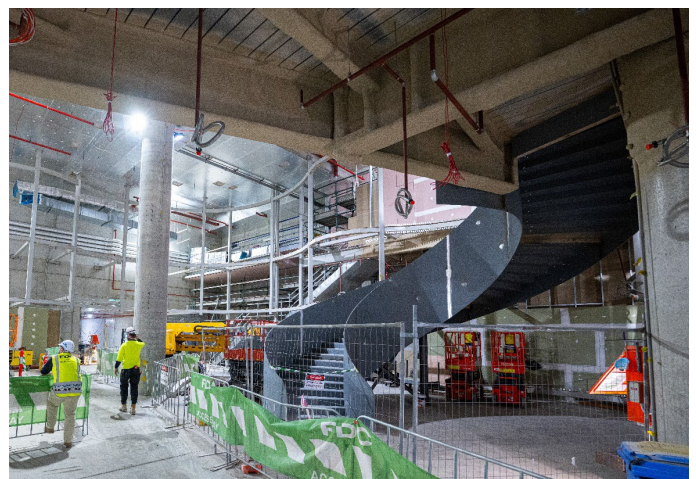
1.8km of plumbing pipework installed

4200 sheets of plasterboard installed

>50% reduction in construction carbon emissions when compared to a reference building



Above: Steel installed for timber façade



Above: Feature staircase installation

Accessible buggy continues

The buggy continues to be available to provide accessible movement between Level 2 and Ground level. Call 0498 033 066 for pick up. The buggy operates daily between 7am and 6pm.

“Trees” Production

Production of the feature “trees” in the event space is well under-way with trunks being shipped from Germany from mid-February 2025. The local manufacture of the Tasmanian Oak timber to the trunks is also underway with arrival on site in March 2025.



Christmas Drive and FDC staff family day

FDC has a more than 10-year relationship with Ronald McDonald House. Up to Christmas, FDC hosted a charity drive to raise money for toys to support Ronald McDonald House. A large range of toys valued at over \$10,000 was gifted by FDC staff and FDC’s trade partners associated to the Cutaway fit out project.

FDC hosted a family day at the Cutaway on the 28 January, hosting more than 200 people including 77 children to show case the works to family and friends associated with the project. Aaron Muru, an Aboriginal artist, shared insights into traditional painting processes. There was also a jumping castle, an opportunity to inspect the plant, food trucks and lots of family-friendly activities.



Thank you for your patience and cooperation while we complete this work.

The health, safety and wellbeing of the community and our workforce remains our top priority throughout these works. The team is committed to working closely with surrounding neighbours to deliver the project safely, keep the community informed and minimise any potential impacts.



More information

For Cutaway **construction related** enquiries, contact

 1800 161 175  Cutaway_Barangaroo@fdcbuilding.com.au

For Barangaroo development updates, [subscribe](#) via the QR code or <https://bit.ly/INSW-email-signup>.

For anything else, contact:

 www.barangaroo.com/future  Barangaroo.info@infrastructure.nsw.gov.au

If you need an interpreter, please call Translating and Interpreting Service (TIS) National on 13 14 50 and ask them to call Infrastructure NSW on 1800 679 121 (between 8:30am – 5pm)

