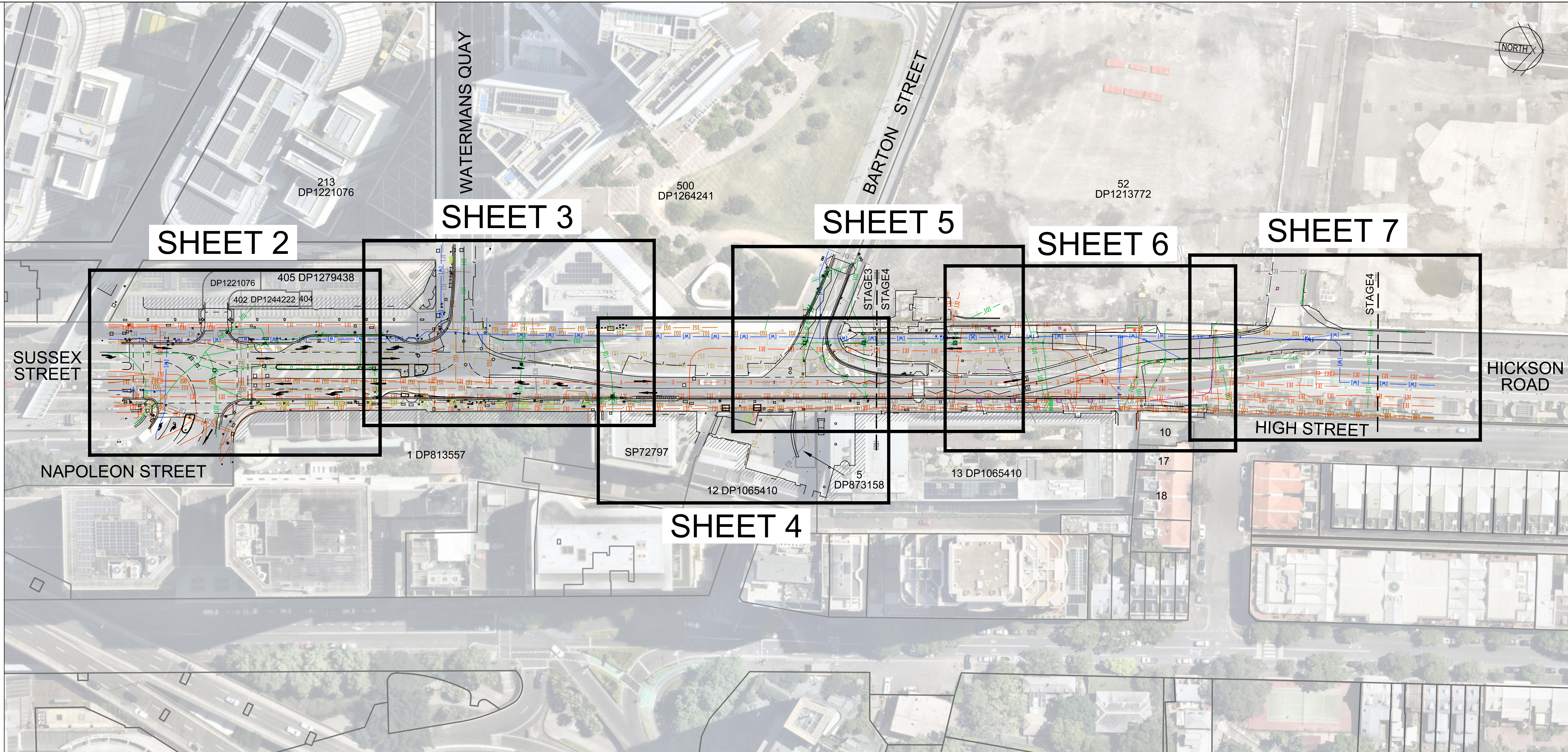


LEGEND

- ELECTRICAL**
 - CABLE JUNCTION BOX
 - CABLE MANHOLE
 - DISTRIBUTION FUSE POINT
 - GARDEN LIGHT
 - POLE - LIGHT
 - POLE - POWER
 - POLE - POWER & LIGHT
 - POWER SERVICE PILLAR - UNDERGROUND
 - TRANSFORMER CABINET CENTRE
- TRAFFIC CONTROL**
 - TRAFFIC CONTROL SIGNAL
 - TRAFFIC SIGNAL CONTROLLER
 - TRAFFIC SIGNAL DETECTOR
 - TRAFFIC SIGNAL JUNCTION BOX
- COMMUNICATIONS**
 - TELEPHONE DISTRIBUTION PILLAR
 - ABOVE GROUND JOINING POST
 - OPTICAL FIBRE JUNCTION BOX
 - OPTICAL FIBRE PIT
 - STD MAIN PIT
 - TELEPHONE BOX POINT
 - TELEPHONE POLE
 - TELEPHONE SINGLE CONCRETE PIT
 - TELEPHONE TRIPLE CONCRETE PIT
 - TELEPHONE TWIN CONCRETE PIT
- GAS**
 - MANHOLE COVER
 - METER
 - PIPELINE MARKER
 - PIPELINE MARKER - HIGH PRESSURE
 - VALVE BOX
 - VENT PIPE
 - TEST POINT
- WATER**
 - AIR VALVE
 - EARTH TERMINAL
 - FIRE HYDRANT
 - HYDRANT
 - METER
 - STOP VALVE
 - TAP
- SEWER**
 - MANHOLE COVER
 - VENT PIPE
 - LAMPPIE
- DRAINAGE / STORMWATER**
 - DRAINAGE JUNCTION MANHOLE
 - GULLY PIT POINT
 - INLET TO SUMP
 - INVERT OF PIPE
 - TOP OF CONCRETE JUNCTION BOX
 - SUBSOIL DRAIN FLUSHPOINT
 - KERB INLET
- CULTURAL**
 - SIGN POST
 - LARGE SIGN
 - BOLLARD
 - FLOOR LEVEL
 - CORNER OF BUILDING
 - PARKING METER
 - HISTORICAL
- MISCELLANEOUS**
 - GATIC COVER LID
 - UNIDENTIFIED POLE
 - UNIDENTIFIED SERVICE PIT
- UNDERGROUND UTILITIES**
 - COMMUNICATIONS
 - DRAINAGE
 - ELECTRICAL
 - GAS & FUEL
 - SEWER
 - TRAFFIC CONTROL
 - WATER
- UNDERGROUND UTILITIES PLOTTED FROM BEFORE YOU DIG AUSTRALIA**
 - COMMUNICATIONS
 - DRAINAGE
 - ELECTRICAL
 - GAS & FUEL
 - SEWER
 - TRAFFIC CONTROL
 - WATER
- NON-DESTRUCTIVE DIGGING SURVEYED LOCATION**



NOTE ON AS 5488.1-2022 CLASSIFICATION OF SUBSURFACE UTILITY INVESTIGATION (SUI)

QUALITY LEVELS

THIS STANDARD PROVIDES A FRAMEWORK FOR THE CLASSIFICATION OF SUBSURFACE UTILITY LOCATION AND ATTRIBUTED INFORMATION IN TERMS OF SPECIFIED QUALITY LEVELS. THE OBJECTIVE OF THIS STANDARD IS TO PROVIDE UTILITY OWNERS, OPERATORS AND LOCATORS WITH A FRAMEWORK FOR THE CONSISTENT CLASSIFICATION OF INFORMATION CONCERNING SUBSURFACE UTILITIES. PROJECT RISKS RELATED TO UNDERGROUND UTILITIES CAN THEN BE PROPERLY MANAGED.

A QUALITY LEVEL DESCRIBES THE AMOUNT AND ACCURACY OF INFORMATION THAT IS COLLECTED OR HELD ON A SUBSURFACE UTILITY. THERE ARE FOUR QUALITY LEVELS: D, C, B AND A

QUALITY LEVEL D (QL-D) IS THE LOWEST OF THESE FOUR QUALITY LEVELS. THE ATTRIBUTE INFORMATION AND METADATA OF A SUBSURFACE UTILITY CAN BE COMPILED FROM ANY, OR A COMBINATION OF, THE FOLLOWING:

- (A) EXISTING RECORDS;
- (B) CURSORY SITE INSPECTION;
- (C) ANECDOTAL EVIDENCE

QUALITY LEVEL C (QL-C) IS DESCRIBED AS A SURFACE FEATURE CORRELATION OR AN INTERPRETATION OF THE APPROXIMATE LOCATION AND ATTRIBUTES OF A SUBSURFACE UTILITY ASSET USING A COMBINATION OF EXISTING RECORDS (AND/OR ANECDOTAL EVIDENCE) AND A SITE SURVEY OF VISIBLE EVIDENCE. THE MINIMUM REQUIREMENT FOR QUALITY LEVEL C IS RELATIVE SPATIAL POSITION. INFORMATION IS COLLECTED BY CORRELATING THE SURVEY OF VISIBLE UTILITY SURFACE FEATURES SUCH AS MARKER PLATES OR WATER HYDRANTS AND ACQUIRED DIAL-BEFORE-YOU-DIG PLANS TO "DRAW" A STRING WHICH SHOWS THE APPROXIMATE POSITION OF SERVICES. OTHER METHODS USED TO OBTAIN PROOF OF THE EXISTENCE OF AN UNDEFINED ENTITY THAT DO NOT UTILIZE PHYSICAL MEASUREMENT OR TRACING THAT SATISFY QUALITY LEVEL B OR QUALITY LEVEL A SPATIAL TOLERANCES (FOR EXAMPLE: GROUND PENETRATING RADAR; ACOUSTIC; PHOTOGRAPHIC; OTHER.)

QUALITY LEVEL B (QL-B) PROVIDES RELATIVE SUBSURFACE FEATURE LOCATION IN THREE DIMENSIONS. THE MINIMUM REQUIREMENT FOR QUALITY LEVEL B IS RELATIVE SPATIAL POSITION. INFORMATION IS COLLECTED BY DESIGNATING THE HORIZONTAL AND VERTICAL LOCATION OF UNDERGROUND UTILITIES BY USING ELECTROMAGNETIC PIPE AND CABLE LOCATORS, SONDES OR FLEXI-TRACE, GROUND PENETRATING RADAR AND ACOUSTIC PULSE EQUIPMENT.

QUALITY LEVEL A (QL-A) IS THE HIGHEST QUALITY LEVEL AND CONSISTS OF THE POSITIVE IDENTIFICATION OF THE ATTRIBUTE AND LOCATION OF A SUBSURFACE UTILITY AT A POINT TO AN ABSOLUTE SPATIAL POSITION IN THREE DIMENSIONS. IT IS THE ONLY QUALITY LEVEL THAT DEFINES A SUBSURFACE UTILITY AS 'VALIDATED'. WHERE THE WHOLE LINE SEGMENT CANNOT BE VERIFIED BY LINE OF SIGHT, QUALITY LEVEL A SHALL NOT BE ATTRIBUTED TO THE LINE SEGMENT BETWEEN VALIDATED POINTS. THE VERTICAL INFORMATION FOR THIS LOCATING METHOD IS TO THE TOP OR SHALLOWEST PART OF THE LOCATED SERVICE.

DISCLAIMER:

THIS SURVEY MODEL INCLUDES INFORMATION DESCRIBING THE LOCATION OF SUBTERRANEAN FEATURES WHICH WERE PURPORTED TO EXIST AT THE TIME OF SURVEY AS SUPPLIED BY BEFORE YOU DIG AUSTRALIA.

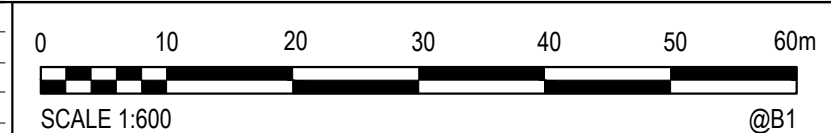
THIS INFORMATION IS QUALITY LEVEL D (QL-D) AND WAS COMPILED FROM COOPERATING UTILITY AUTHORITIES. WHILE ALL CARE HAS BEEN TAKEN IN THE PREPARATION OF THIS SURVEY MODEL, RPS CANNOT GUARANTEE THAT THE SURVEY MODEL IS WITHOUT FLAW OR OMISSIONS. RPS CANNOT TAKE RESPONSIBILITY OF ANY KIND WHATSOEVER FOR ANY LOSS, DAMAGE OR OTHER CONSEQUENCES WHICH MAY ARISE FROM ANY PERSON RELYING ON ANY THING STATED ON THIS PLAN.

IN PARTICULAR, IT IS RECOMMENDED THAT USERS SATISFY THEMSELVES AS TO THE LOCATION OF SUBTERRANEAN FEATURES SUCH AS UTILITIES WHICH MAY OR MAY NOT BE SHOWN ON THE PLAN.

EXPLANATORY NOTES:

1. THIS MODEL SHOULD BE VIEWED IN A CAD ENVIRONMENT TO INTERPRET THE 3D INFORMATION.
2. ANY ELECTRONIC FILE IS PROVIDED WITHOUT WARRANTY AND SHOULD BE USED ONLY IN CONJUNCTION WITH THE SUPPLIED PDF/IMAGE COPY OF THIS PLAN.
3. THESE NOTES ARE AN INTEGRAL PART OF THE DIGITAL DATA FILE AND SHOULD BE READ WITH THE DATA FILE AND MUST NOT BE REMOVED FROM THE DATA FILE.
4. NO INVESTIGATION OF UNDERGROUND SERVICES HAS BEEN MADE OTHER THAN ACCESSIBLE DRAINAGE PITS.
5. IT REMAINS THE RESPONSIBILITY OF THOSE CONDUCTING PHYSICAL WORKS TO ENSURE AN UP-TO-DATE VERSION OF BEFORE YOU DIG AUSTRALIA PLANS IS CONSULTED AND AVAILABLE ON SITE.
6. ALL UTILITIES SHOULD TO BE POTHOLED TO VERIFY LOCATION AND DEPTH.
7. THIS SURVEY PLAN REPRESENTS THE LOCATION OF FEATURES THAT WERE ACCESSIBLE AT THE TIME OF SURVEY.
8. FOR REASONS OF PLAN PRESENTATION, NOT ALL OF THE INFORMATION CAN BE SHOWN ON THIS PLAN. PLEASE REFER TO ACCOMPANYING DIGITAL DATA FOR ALL SURVEY INFORMATION AND ATTRIBUTES.
9. THIS SURVEY IS ON MGA2020 PROJECT COORDINATES
10. CONTOURS ARE AN INDICATION OF LANDFORM AND SHOULD NOT BE TAKEN IN PREFERENCE TO SPOT LEVELS SHOWN.
11. CONTOUR INTERVAL SHOWN 0.1m
12. REDUCED LEVELS HAVE BEEN SET TO NON-PRINTABLE AND ARE AVAILABLE IN THE CAD FILE.
13. BUILDING FOOTPRINTS SHOWN ARE AT GROUND LEVEL. FOOTPRINTS MAY DIFFER AT OTHER LEVELS.
14. OVERHEAD POWERLINES HAVE NOT BEEN SURVEYED. NO ATTEMPT HAS BEEN MADE TO LOCATE THE POSITION OR REDUCED LEVEL OF INDIVIDUAL CABLES

Rev.	Item	Revision Description	Date	Rev.	Item	Revision Description	Date
G		INFRASTRUCTURE NSW LOGO ADDED	4.11.25				
F		NON-DESTRUCTIVE DIGGING UTILITY SURVEY ADDED	3.10.25				
E		NON-DESTRUCTIVE DIGGING UTILITY SURVEY ADDED	26.06.24				
D		SURVEY ADDED FOR STAGE 4	8.09.23				
C		SPOT LEVELS AND DRAINAGE INFORMATION ADDED	20.08.23				
B		INITIAL ISSUE	17.06.23				
A		PRELIMINARY ISSUE	26.05.23				

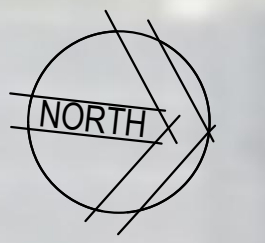


COPYRIGHT © RPS AAP CONSULTING PTY LTD. INFORMATION CONTAINED IN THIS DRAWING FILE IS THE COPYRIGHT OF RPS AAP CONSULTING PTY LTD. COPYING OR USING THIS DATA IN WHOLE OR PART IN ANY FORMAT, WITHOUT PERMISSION INFRINGES COPYRIGHT. THIS DOCUMENT IN BOTH ELECTRONIC AND HARD COPY FORMAT IS AND SHALL REMAIN THE PROPERTY OF RPS AAP CONSULTING PTY LTD. THE INFORMATION MAY ONLY BE USED FOR THE PURPOSE FOR WHICH IT WAS COMMISSIONED AND IN ACCORDANCE WITH THE TERMS OF ENGAGEMENT FOR THE COMMISSION. UNAUTHORISED USE OF THIS INFORMATION IN ANY FORM WHATSOEVER IS PROHIBITED.

RPS MAKING COMPLEX EASY

RPS AAP CONSULTING PTY LTD (ABN 97 117 883 173)
 LEVEL 13 420 GEORGE STREET SYDNEY NSW 2000
 T: 02 9270 8300 F: 02 9248 9810 www.rpsgroup.com.au

Lead Consultant	Enspire Solutions Pty Ltd	Principal	Infrastructure NSW	Project	BARANGAROO SOUTH	Title	STAGE 3 - HICKSON RD UPGRADE WORKS DETAIL AND CONTOUR SURVEY SHEET 1 OF 7
Collaborating Architects		Developer	Infrastructure NSW / Lend Lease			Drawn By	LB
		Project Management & Construction	Lend Lease			Designed	ITC
		Design	Lend Lease			Checked	AL
Consultant						Approved By	
						Date	JUN '23
						Scale	1:600
						Drawing No.	AU213009952-DT-001
						Revision	G



405 DP1279438

DP1221076

405 DP1279438

402 DP1244222

404

PAVED PATH

PAVED PATH

PC1

HICKSON ROAD

ROAD

BH8

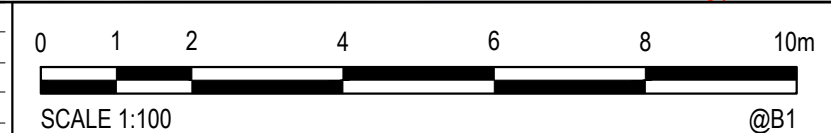
1 DP813557

NAPOLEON STREET

(TRAFFIC CONTROL SIGNALS IN THIS AREA, NOT AVAILABLE ON BYDA)

EXPLANATORY NOTES ON SHEET 1 ARE APPLICABLE TO ALL SHEETS ON THIS PLAN


Rev.	Item	Revision Description	Date	Rev.	Item	Revision Description	Date
G		INFRASTRUCTURE NSW LOGO ADDED	4.11.25				
F		NON-DESTRUCTIVE DIGGING UTILITY SURVEY ADDED	3.10.25				
E		NON-DESTRUCTIVE DIGGING UTILITY SURVEY ADDED	26.06.24				
D		SURVEY ADDED FOR STAGE 4	8.09.23				
C		SPOT LEVELS AND DRAINAGE INFORMATION ADDED	20.08.23				
B		INITIAL ISSUE	12.06.23				
A		PRELIMINARY ISSUE	26.05.23				




rps MAKING COMPLEX EASY

RPS AAP CONSULTING PTY LTD (ABN 97 117 883 173)
 LEVEL 13 420 GEORGE STREET SYDNEY NSW 2000
 T: 02 9270 8300 F: 02 9248 9810 www.rpsgroup.com.au

Lead Consultant: **Enspire Solutions Pty Ltd**

Collaborating Architects: **Infrastructure NSW** 

Consultant: **BARANGAROO SOUTH**

Principal: **Infrastructure NSW** 

Developer: Infrastructure NSW / Lend Lease

Project Management & Construction: Lend Lease

Design: Lend Lease

30 The Bond 30 Hickson Road
 Millers Point NSW 2000
 www.lendlease.com



Project: **BARANGAROO SOUTH**

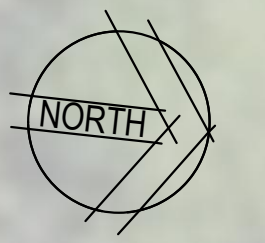
Title: **STAGE 3 - HICKSON RD UPGRADE WORKS
 DETAIL AND CONTOUR SURVEY
 SHEET 2 OF 7**

Drawn By	Designed	Checked	Approved By	Date
LB	ITC	GE		JUN '23

Scale: 1:100

Drawing No.: **AU213009952-DT-001**

Revision: **G**



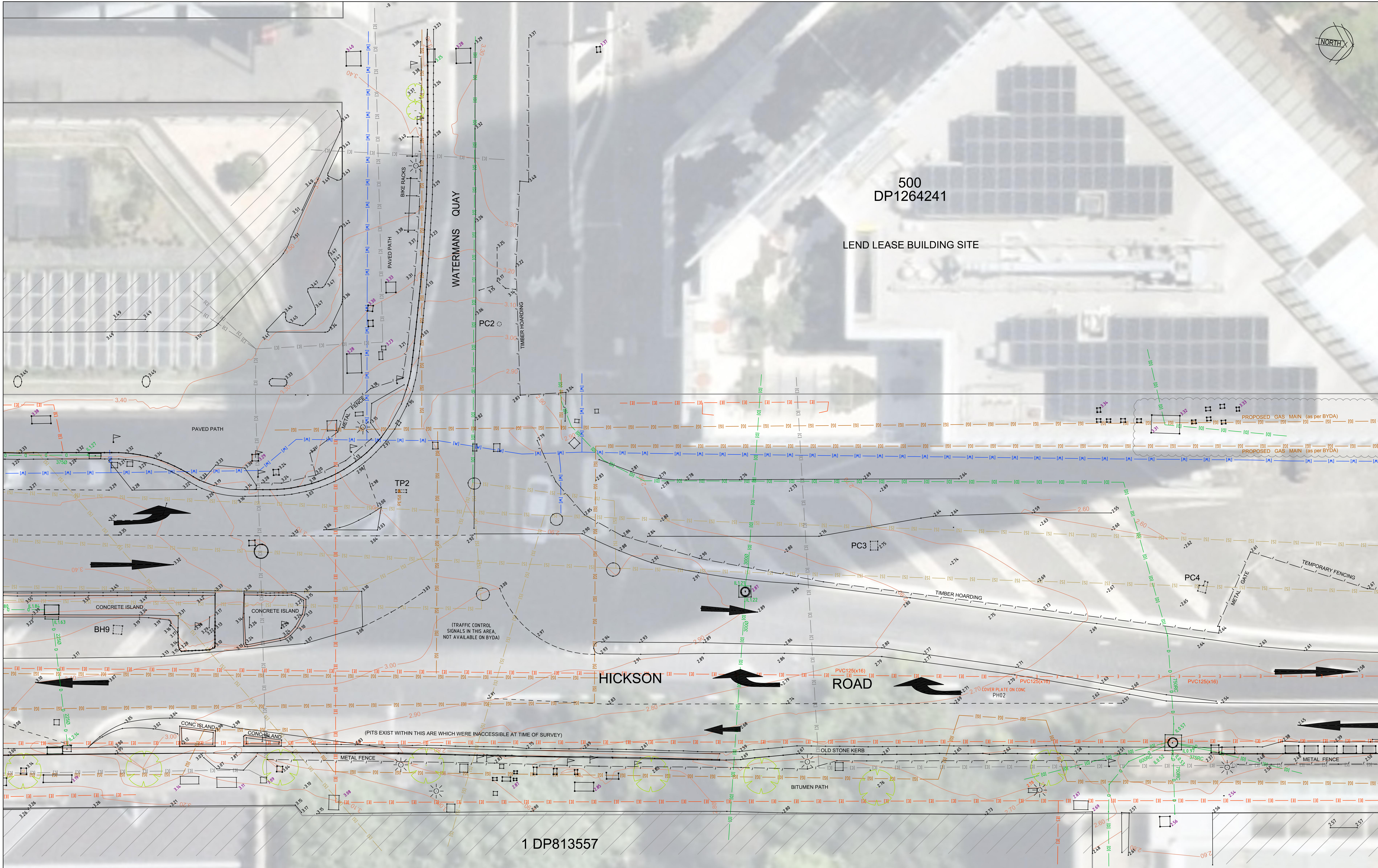
500
DP1264241

LEND LEASE BUILDING SITE

WATERMANS QUAY

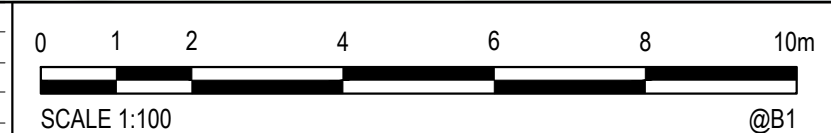
HICKSON ROAD

1 DP813557



EXPLANATORY NOTES ON SHEET 1 ARE APPLICABLE TO ALL SHEETS ON THIS PLAN

Rev.	Item	Revision Description	Date
G	INFRASTRUCTURE NSW LOGO ADDED		4.11.25
F	NON-DESTRUCTIVE DIGGING UTILITY SURVEY ADDED		3.10.25
E	NON-DESTRUCTIVE DIGGING UTILITY SURVEY ADDED		26.06.24
D	SURVEY ADDED FOR STAGE 4		8.09.23
C	SPOT LEVELS AND DRAINAGE INFORMATION ADDED		20.06.23
B	INITIAL ISSUE		12.06.23
A	PRELIMINARY ISSUE		26.05.23



COPYRIGHT © RPS AAP CONSULTING PTY LTD.
INFORMATION CONTAINED IN THIS DRAWING FILE IS THE COPYRIGHT OF RPS AAP CONSULTING PTY LTD. COPYING OR USING THIS DATA IN WHOLE OR PART IN ANY FORMAT, WITHOUT PERMISSION INFRINGES COPYRIGHT.
THIS DOCUMENT IN BOTH ELECTRONIC AND HARD COPY FORMAT IS AND SHALL REMAIN THE PROPERTY OF RPS AAP CONSULTING PTY LTD. THE INFORMATION MAY ONLY BE USED FOR THE PURPOSE FOR WHICH IT WAS COMMISSIONED AND IN ACCORDANCE WITH THE TERMS OF ENGAGEMENT FOR THE COMMISSION. UNAUTHORISED USE OF THIS INFORMATION IN ANY FORM WHATSOEVER IS PROHIBITED.

RPS MAKING COMPLEX EASY

RPS AAP CONSULTING PTY LTD (ABN 97 117 883 173)
LEVEL 13 420 GEORGE STREET SYDNEY NSW 2000
T: 02 9270 8300 F: 02 9248 9810 www.rpsgroup.com.au

Lead Consultant	Enspire Solutions Pty Ltd
Collaborating Architects	Infrastructure NSW / Lend Lease
Project Management & Construction	Lend Lease
Design	Lend Lease

Principal	Infrastructure NSW / Lend Lease
Developer	Infrastructure NSW / Lend Lease
Project Management & Construction	Lend Lease
Design	Lend Lease

Project: **BARANGAROO SOUTH**

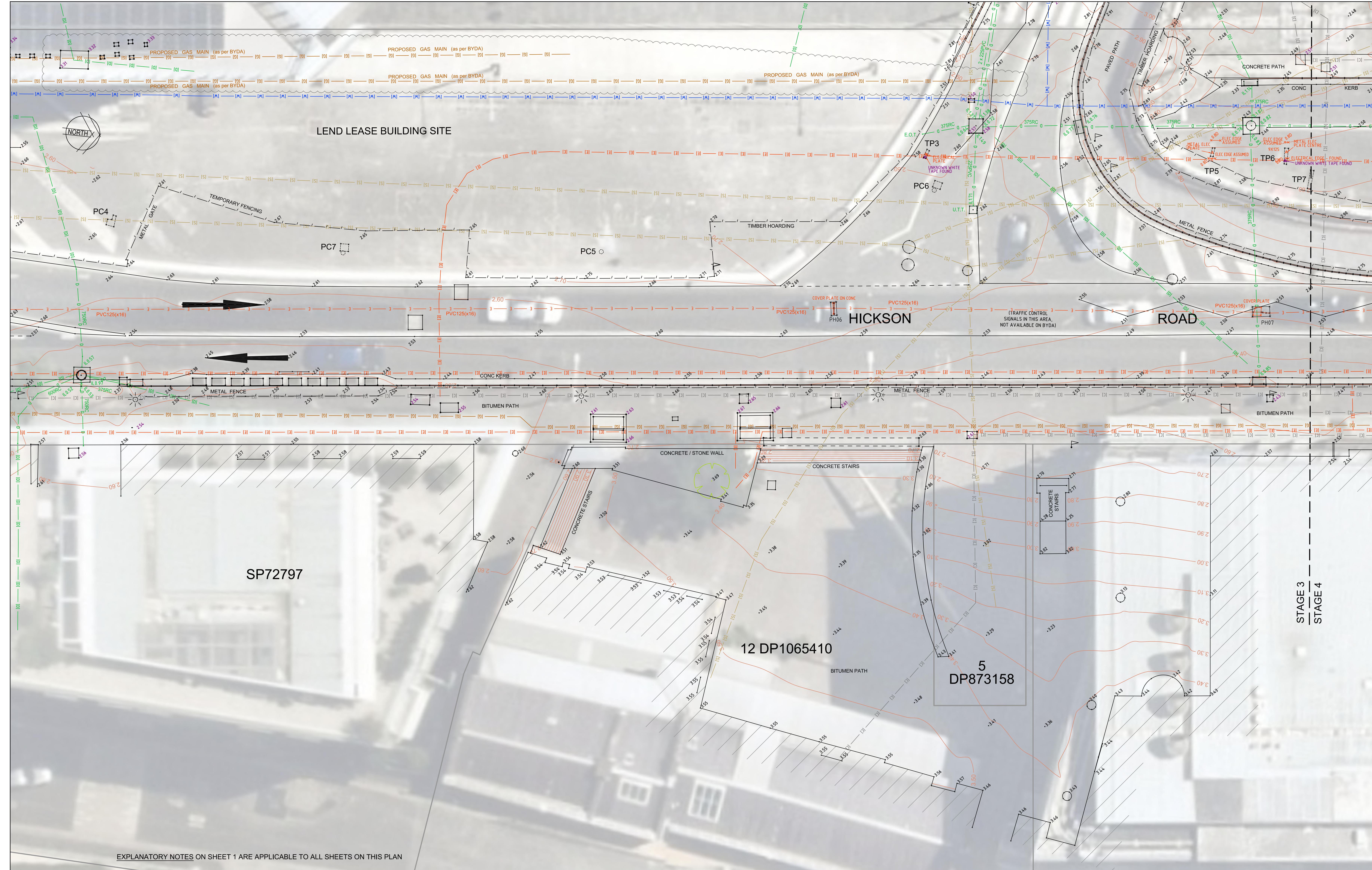
Title: **STAGE 3 - HICKSON RD UPGRADE WORKS
DETAIL AND CONTOUR SURVEY
SHEET 3 OF 7**

Drawn By: LB
Designed: ITC
Checked: GE
Approved By: JN
Date: JUN '23

Scale: 1:100

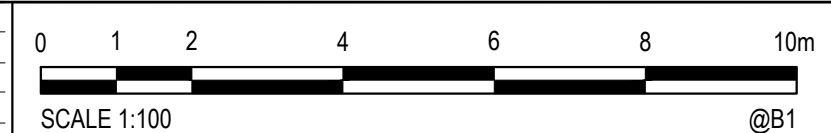
Drawing No.: **AU213009952-DT-001**

Revision: **G**



EXPLANATORY NOTES ON SHEET 1 ARE APPLICABLE TO ALL SHEETS ON THIS PLAN

Rev.	Item	Revision Description	Date	Rev.	Item	Revision Description	Date
G		INFRASTRUCTURE NSW LOGO ADDED	4.11.25				
F		NON-DESTRUCTIVE DIGGING UTILITY SURVEY ADDED	3.10.25				
E		NON-DESTRUCTIVE DIGGING UTILITY SURVEY ADDED	26.06.24				
D		SURVEY ADDED FOR STAGE 4	8.09.23				
C		SPOT LEVELS AND DRAINAGE INFORMATION ADDED	20.08.23				
B		INITIAL ISSUE	12.06.23				
A		PRELIMINARY ISSUE	26.05.23				



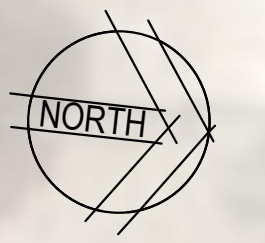
COPYRIGHT © RPS AAP CONSULTING PTY LTD.
 INFORMATION CONTAINED IN THIS DRAWING FILE IS THE COPYRIGHT OF RPS AAP CONSULTING PTY LTD. COPYING OR USING THIS DATA IN WHOLE OR PART IN ANY FORMAT, WITHOUT PERMISSION INFRINGES COPYRIGHT. © THIS DOCUMENT IN BOTH ELECTRONIC AND HARD COPY FORMAT IS AND SHALL REMAIN THE PROPERTY OF RPS AAP CONSULTING PTY LTD. THE INFORMATION MAY ONLY BE USED FOR THE PURPOSE FOR WHICH IT WAS COMMISSIONED AND IN ACCORDANCE WITH THE TERMS OF ENGAGEMENT FOR THE COMMISSION. UNAUTHORISED USE OF THIS INFORMATION IN ANY FORM WHATSOEVER IS PROHIBITED.

RPS MAKING COMPLEX EASY
 RPS AAP CONSULTING PTY LTD (ABN 97 117 883 173)
 LEVEL 13 420 GEORGE STREET SYDNEY NSW 2000
 T: 02 9270 8300 F: 02 9248 9810 www.rpsgroup.com.au

Lead Consultant	Enspire Solutions Pty Ltd
Collaborating Architects	Infrastructure NSW / Lend Lease
Project Management & Construction	Lend Lease
Design	Lend Lease
Consultant	30 The Bond 30 Hickson Road Millers Point NSW 2000 www.lendlease.com

Infrastructure NSW
 Principal
 Developer
 Project Management & Construction
 Design

BARANGAROO SOUTH
 Project
 Title: STAGE 3 - HICKSON RD UPGRADE WORKS
 DETAIL AND CONTOUR SURVEY
 SHEET 4 OF 7
 Drawn By: LB, ITC, GE, Approved By: [Signature], Date: JUN '23
 Scale: 1:100
 Drawing No.: AU213009952-DT-001
 Revision: G

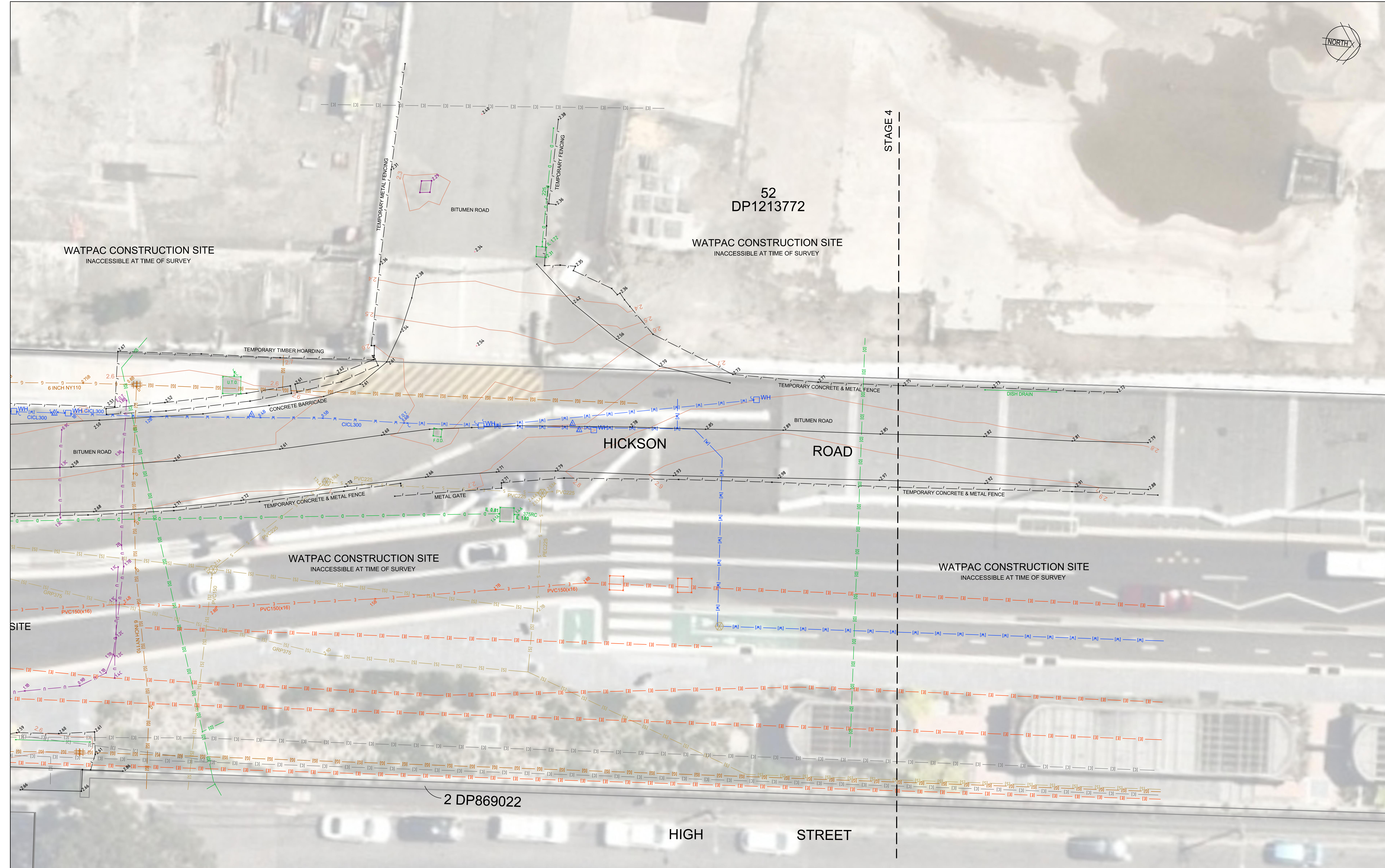


52
DP1213772

WATPAC CONSTRUCTION SITE
INACCESSIBLE AT TIME OF SURVEY

WATPAC CONSTRUCTION SITE
INACCESSIBLE AT TIME OF SURVEY

STAGE 4



WATPAC CONSTRUCTION SITE
INACCESSIBLE AT TIME OF SURVEY

WATPAC CONSTRUCTION SITE
INACCESSIBLE AT TIME OF SURVEY

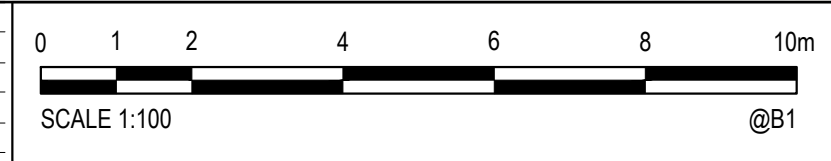
SITE

2 DP869022

HICKSON ROAD
HIGH STREET

EXPLANATORY NOTES ON SHEET 1 ARE APPLICABLE TO ALL SHEETS ON THIS PLAN

Rev.	Item	Revision Description	Date	Rev.	Item	Revision Description	Date
G		INFRASTRUCTURE NSW LOGO ADDED	4.11.25				
F		NON-DESTRUCTIVE DIGGING UTILITY SURVEY ADDED	3.10.25				
E		NON-DESTRUCTIVE DIGGING UTILITY SURVEY ADDED	26.06.24				
D		SURVEY ADDED FOR STAGE 4	8.09.23				
C		SPOT LEVELS AND DRAINAGE INFORMATION ADDED	20.08.23				
B		INITIAL ISSUE	2.06.23				
A		PRELIMINARY ISSUE	26.05.23				



COPYRIGHT © RPS AAP CONSULTING PTY LTD.
INFORMATION CONTAINED IN THIS DRAWING IS THE COPYRIGHT OF RPS AAP CONSULTING PTY LTD. COPYING OR USING THIS DATA IN WHOLE OR PART IN ANY FORMAT, WITHOUT PERMISSION INFRINGES COPYRIGHT. THIS DOCUMENT IN BOTH ELECTRONIC AND HARD COPY FORMATS IS AND SHALL REMAIN THE PROPERTY OF RPS AAP CONSULTING PTY LTD. THE INFORMATION MAY ONLY BE USED FOR THE PURPOSE FOR WHICH IT WAS COMMISSIONED AND IN ACCORDANCE WITH THE TERMS OF ENGAGEMENT FOR THE COMMISSION. UNAUTHORISED USE OF THIS INFORMATION IN ANY FORM WHATSOEVER IS PROHIBITED.

rps MAKING COMPLEX EASY
RPS AAP CONSULTING PTY LTD (ABN 97 117 883 173)
LEVEL 13 420 GEORGE STREET SYDNEY NSW 2000
T: 02 9270 8300 F: 02 9248 9810 www.rpsgroup.com.au

Lead Consultant
Enspire Solutions Pty Ltd
Collaborating Architects
Developer Infrastructure NSW / Lend Lease
Project Management & Construction Lend Lease
Design Lend Lease
Consultant
30 The Bond 30 Hickson Road
Millers Point NSW 2000
www.lendlease.com

Principal
Infrastructure NSW
Project
BARANGAROO SOUTH
MP

Title
STAGE 3 - HICKSON RD UPGRADE WORKS
DETAIL AND CONTOUR SURVEY
SHEET 7 OF 7
Drawn By LB
Designed ITC
Checked GE
Approved By
Date JUN '23
Scale
1:100
Drawing No.
AU213009952-DT-001
Revision
G