

The Cutaway

The Cutaway is being transformed by the NSW Government into one of Sydney's premier cultural facilities and an outstanding venue for events, exhibitions, festivals, and installations. FDC Construction has been engaged to carry out the fit-out works, which will span three levels and offer new event, gallery, and education spaces.

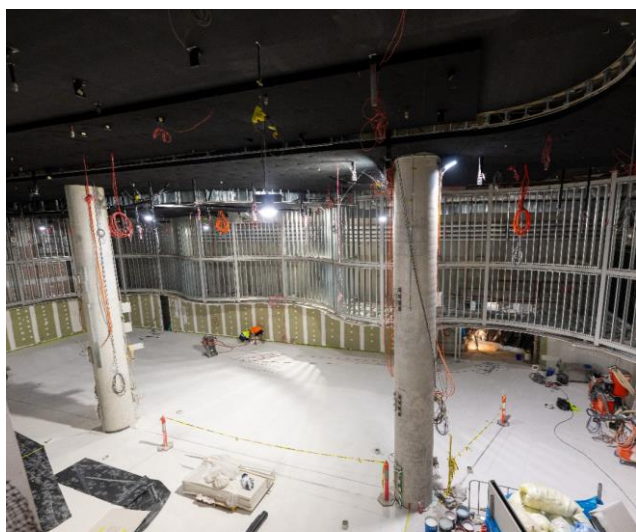
Works update and upcoming works

Interior fit out on the Mezzanine level and on Levels 1 and 2 is proceeding well. In the Pre-Function Zone, the decorative flooring is being installed and the stairs are being painted with final coats. The install of the feature glass reinforced concrete (GRC) is progressing in the front entry near Nawi Cove. Recently completed work includes the Harbour Control Tower infill slab to the northern void and the lift shaft penetrations.

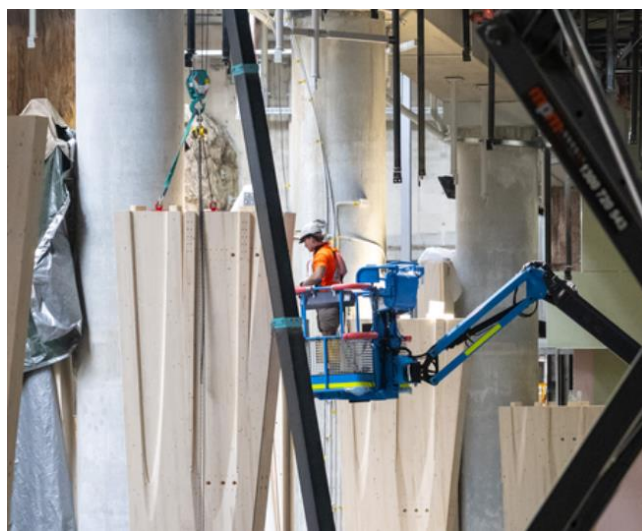
Back of House progress includes office fit-outs with joinery in progress, bathroom installations, and the completed commercial kitchen. Plant rooms are also finished and ready for commissioning. In the Event Hall, the skylights continue to be installed with the top layer of glass almost complete.

The structural supports for the feature "trees" have been completed. Installation of the Australian Tasmanian Oak timber "trunks" on the columns in the Main Event Hall is now complete. The tops of the timber trees will start in the coming weeks. The first of three shipping containers of European Spruce timber is starting to arrive on site.

Other upcoming works include lift well and lift car upgrades and will result in slower lift trips. One lift will always be active.



Above: Install of decorative flooring in Pre-Function



Above: Install of "tree" trunks in the Main Event Hall

Spotlight on ...

“Trees” Production

Timber “trees” are an important design feature of the Cutaway fit-out in terms of aesthetics and acoustic performance of the space. 13 timber trees will be installed throughout the Cutaway, and will include both Australian Tasmanian Oak timber (“trunks”) and European glulam tops (“leaves”). Each tree has more than 120 timber components for connection.

Skylights

Skylights are an important design feature to make the event space weather tight, reduce noise to nearby community, improve acoustics, and provide thermal efficiency. The bottom glazing layer has been installed, whilst the upper layer is being progressively installed throughout May.

Scan the QR code to see the skylight install underway.



Women in construction

The project is on target to hit the required 4% target of women in trade-based roles, this target is double the industry average. Roles being undertaken by women in the Cutaway project include electricians, plumbers, mechanical plumbers, painters, joiners, and traffic controllers.

Apprentice electrician, Brooke Davis, will feature in a forthcoming promotional campaign for women in trade roles at the Cutaway. Additionally, FDC and Infrastructure NSW have strong female representation across management and engineering roles within the project.

HARD
WORK
KNOWS **NO GENDER**



Thank you for your patience while we complete this work

The project team is committed to working closely with surrounding neighbours to deliver the project safely and keep the community informed about the works to minimise any potential impacts.

The **accessible buggy** continues to be available to provide accessible movement between Level 2 and Ground level. Call 0498 033 066 for pick up. The buggy operates daily between 7am and 6pm.

More information

For Cutaway **construction related** enquiries, contact

 1800 161 175  Cutaway_Barangaroo@fdcbuilding.com.au

 www.barangaroo.com/future

 Barangaroo.info@infrastructure.nsw.gov.au

If you need an interpreter, please call Translating and Interpreting Service (TIS) National on 13 14 50 and ask them to call Infrastructure NSW on 1800 679 121 (between 8:30am – 5pm)

Scan or [subscribe](#) for
Barangaroo
Development updates

