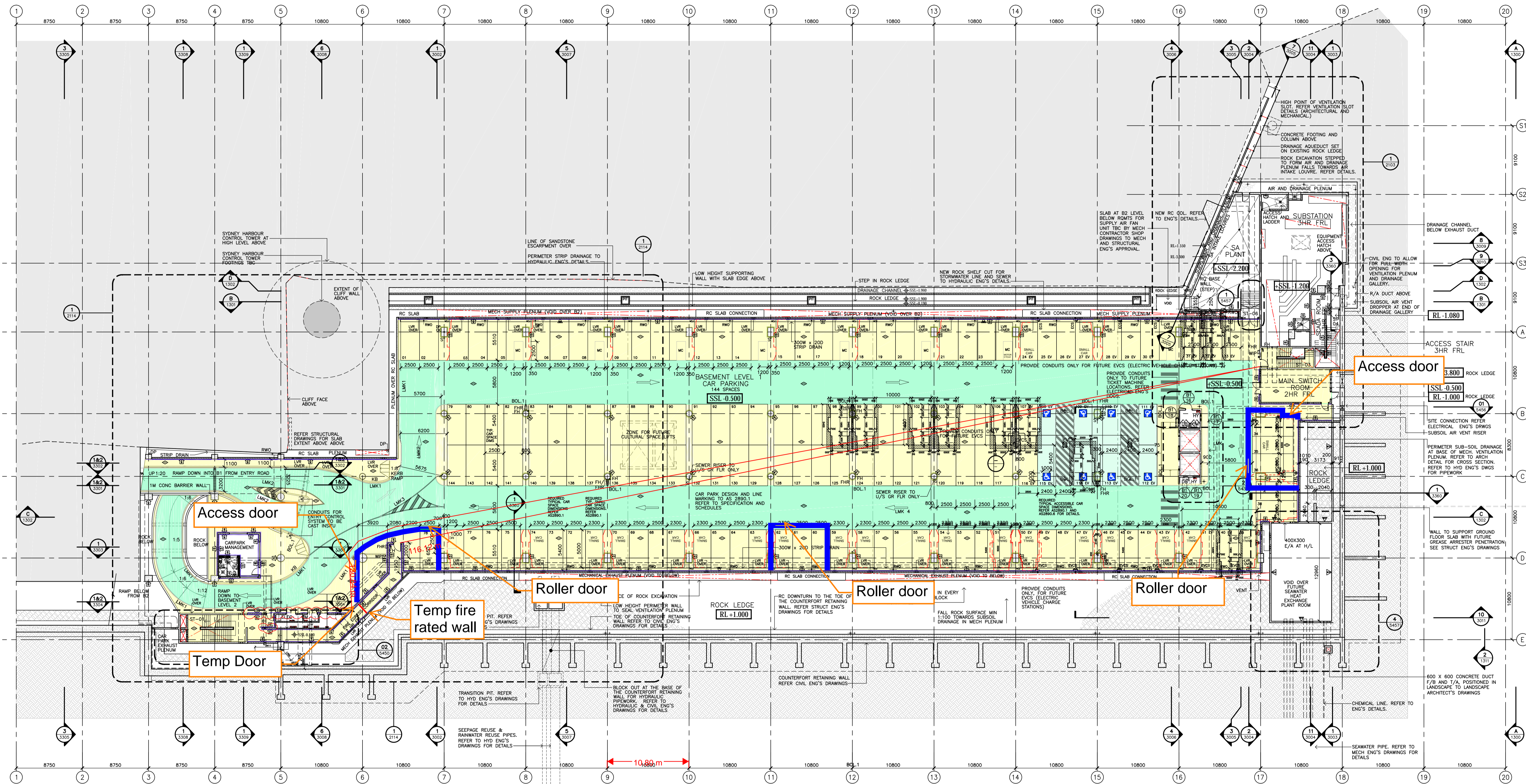


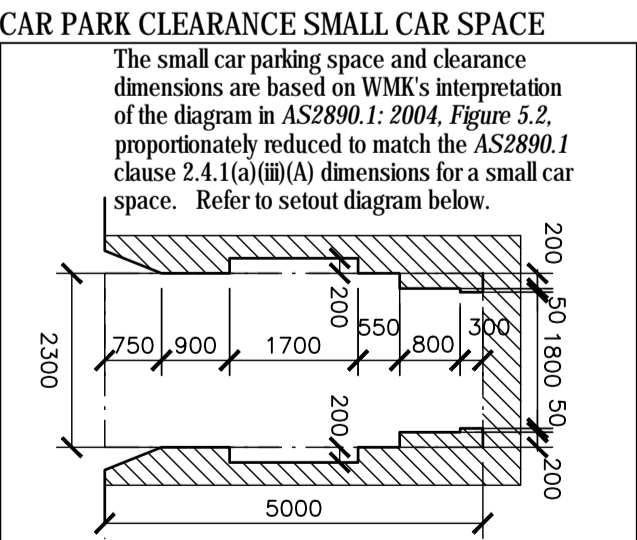
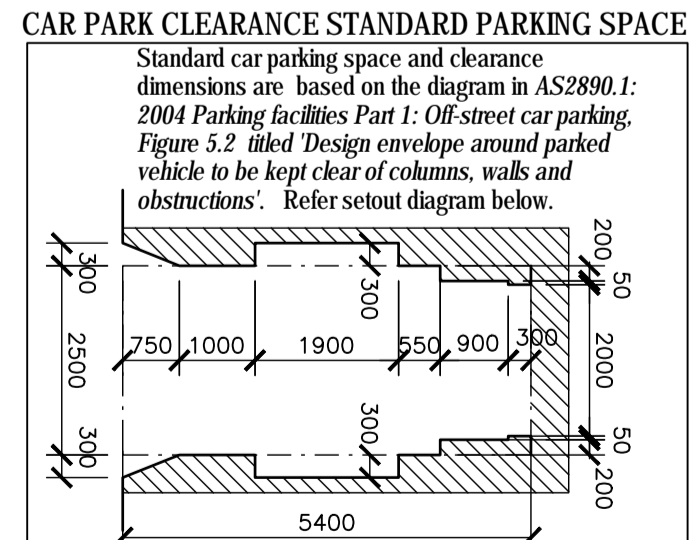
APPENDIX A – HOARDING SKETCHES



1 GENERAL ARRANGEMENT PLAN
BASEMENT 1 RL-0.5 1:250

CAR PARK NUMBERS

LEVEL B1:	115 STANDARD CAR SPACES 21 SMALL CAR SPACES 8 ACCESSIBLE CAR SPACES
	144 CAR SPACES TOTAL
LEVEL B2:	124 STANDARD CAR SPACES 32 SMALL CAR SPACES
	156 CAR SPACES TOTAL
LEVELS B1 & B2 TOTAL: 144 + 156 = 300 CAR SPACES STANDARD: 239 SMALL: 53 ACC: 8 TOTAL: 300 RATIO OF SMALL CAR SPACES TO TOTAL: 17.6%	



LEGEND FOR MAIN LEGEND REFER TO A-S3-0001

LMK 1	CAR PARK BAY LINE MARKING AND ROADWAY EDGE MARKING
LMK 2	TRAFFIC DIRECTION ARROWS
LMK 3	HAZARD MARKING
LMK 4	CAR PARK BAY LETTERING
NOTE:	ALL LINE MARKING TO CIVIL ENGINEER'S DOCUMENTATION
	UNOBSTRUCTED MINIMUM HEIGHT ABOVE PATH TO ACCESSIBLE CAR SPACES: 2.3M CLEAR
	UNOBSTRUCTED MINIMUM HEIGHT ABOVE ACCESSIBLE PARKING SPACES: 2.5M CLEAR

- NOTE:**
- REFER TO DRAWING No. A-S3-5500 FOR WALL TYPE SCHEDULE AND WALL LINING DETAILS.
 - REFER TO DETAIL AREA PLANS FOR DOOR, WINDOW AND LOUVER NUMBERS WHERE NOT INDICATED.
 - READ DRAWING IN CONJUNCTION WITH A-S3-1101 AND A-S3-1103, SPECIFICATION AND SCHEDULES, AND ARCHITECTURAL CONCRETE SETOUT DRAWINGS.
 - REFER TO 'PAINTING' WORK SECTION IN THE ARCHITECTURAL SPECIFICATION.

APPLIED FINISHES AND EXTENTS:

WF0	NO FINISH TO WALL
WF1	PENETRATING INVISIBLE FINISH CONCRETE SEALER. REFER 'PAINTING' WORK SECTION IN THE ARCH. SPEC.
WF2	DULUX 'VIVID WHITE' REFER 'PAINTING' WORK SECTION IN THE ARCHITECTURAL SPEC.
WF3	DULUX 'LAIRD' P20.E9 SEMI-GLOSS.
FP0	PENETRATING INVISIBLE FLOOR SEALER. REFER 'PAINTING' WORK SECTION. INCLUDES DRIVEWAY CIRCULATION AREAS. NOTE SLIP RESISTANCE REQUIREMENTS.
FP1	NO FINISH TO FLOOR

APPLIED FINISHES NOTES

DULUX 'VIVID WHITE' TO ALL CONCRETE BLOCK WALLS. ENSURE FILM BUILD THICKNESS AND FULL COVERAGE IS ACHIEVED. COLUMN ID LETTERS - COLOUR - VIVID WHITE WHITE.

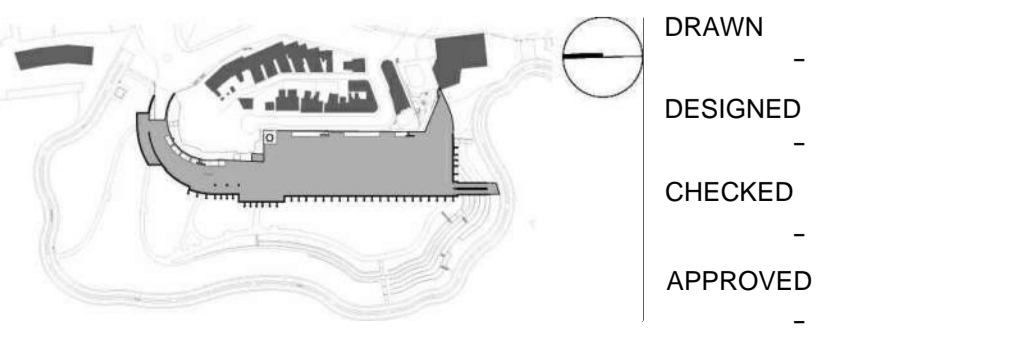
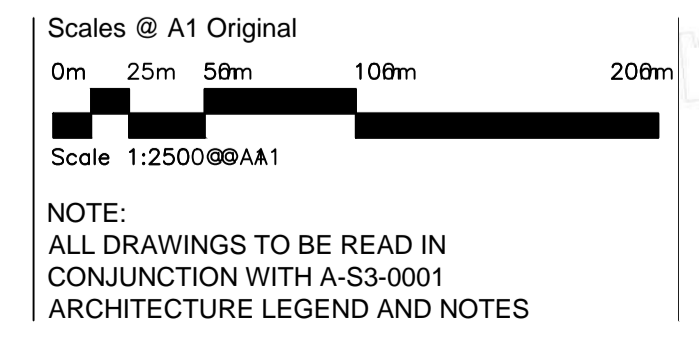
DULUX 'LAIRD' P20.E9 SEMI-GLOSS. COLUMNS TO BE PAINTED FROM 1M AFFL TO BEAM SOFFIT ABOVE. REFER TO 'PAINTING' WORK SECTION IN THE ARCHITECTURAL SPECIFICATION.

NOTE THAT WALLS WITHIN PLANT AND SERVICES ROOM AND CUPBOARDS WILL NOT BE PAINTED OR SEALED.

AS BUILT

Rev	App	Ckd	Revision or reason for issue	Date
X1			AS BUILT	20.05.15
X2			DELETED REVISION HISTORY	05.08.15

Rev	App	Ckd	Revision or reason for issue	Date



DRAWN	-
DESIGNED	-
CHECKED	-
APPROVED	-

Contractor

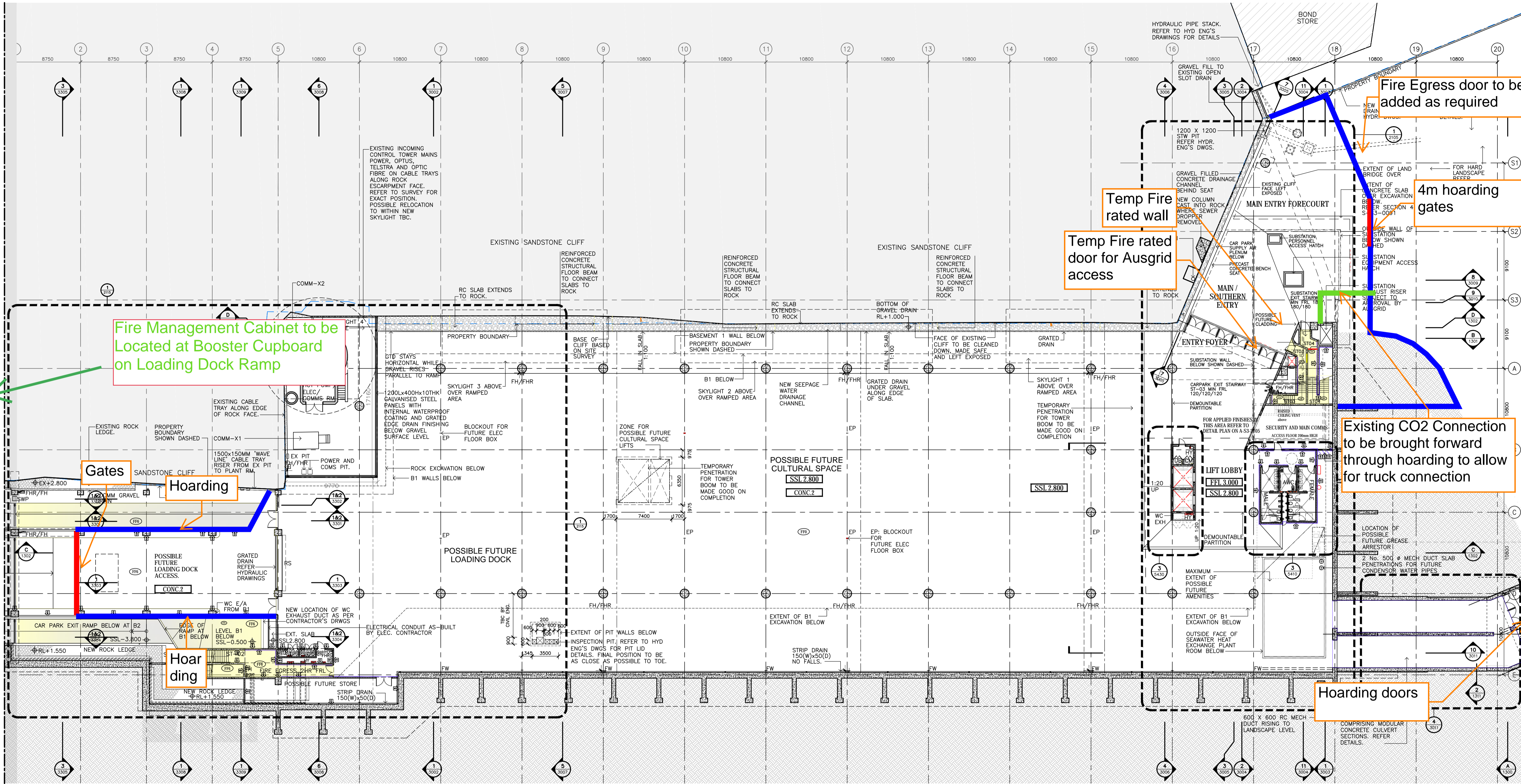
Baulderstone Pty Ltd
Trinity Business Campus Level 4
39 Delhi Rd
North Ryde NSW 2113 Australia

Telephone: +61 2 9935 7100
Facsimile: +61 2 9935 7080

www.baulderstone.com.au

Project Name	BARANGAROO HEADLAND PARK PUBLIC DOMAIN MAIN WORKS
Drawing Title	BASEMENT PLAN LEVEL 1
1:250	
Project Number	1244
Drawing Number	A-S3-1102
Documentation Stage	AS BUILT Revision X2

FOR CONTINUATION REFER TO DRAWING A-S3-1111



LEGEND:

B1	BASEMENT LEVEL ONE
CE	CAR PARK EXHAUST
D	DEPTH
EP	ELECTRICAL FLOOR BOX CONNECTION POINT. REFER ENG'S DRAWINGS.
FHR	FIRE HOSE REEL. REFER TO HYDRAULIC ENG'S DRAWINGS
FH	FIRE HYDRANT. REFER TO HYDRAULIC ENG'S DRAWINGS
FFL	FINISHED FLOOR LEVEL
FW	FLOOR WASTE
RS	ROLLER SHUTTER
SSL	STRUCTURAL SLAB LEVEL
W	WIDTH
WC	TOILET (WATER CLOSET)

DRAWING KEY:

NEW FILLO CIVIL ENGINEER'S DWGS.	
EXISTING ROCK	

NOTE:

- REFER TO DRAWING No. A-S3-5500 FOR WALL TYPE SCHEDULE AND WALL LINING DETAILS.
- REFER TO DETAIL AREA PLANS FOR DOOR, WINDOW AND LOUVER NUMBERS WHERE NOT INDICATED.
- READ DRAWING IN CONJUNCTION WITH A-S3-1101 AND A-S3-1103. SPECIFICATION AND SCHEDULES, AND ARCHITECTURAL CONCRETE SETOUT DRAWINGS.
- REFER TO 'PAINTING' WORK SECTION IN THE ARCHITECTURAL SPECIFICATION.

APPLIED FINISHES AND EXTENTS:

- REFER 'PAINTING' WORK SECTION IN THE ARCHITECTURAL SPEC. FOR APPLIED FINISHES.
- PENETRATING INVISIBLE FINISH CONCRETE SEALER.
- NO FINISH TO FLOOR
- NO FINISH TO WALL
- DULUX 'VIVID WHITE'. REFER 'PAINTING' WORK SECTION IN THE ARCHITECTURAL SPEC.
- DULUX 'LAIRD' P20E9 SEMI-GLOSS.
- DULUX 'PLAY SCHOOL' P09.H9 SEMI-GLOSS.

- PENETRATING FLOOR SEALER. REFER 'PAINTING' WORK SECTION. INCLUDES DRIVEWAY CIRCULATION AREAS. NOTE SLIP RESISTANCE REQUIREMENTS.
- NO APPLIED FINISHES IN PLANT OR SERVICE ROOMS OR CUPBOARDS.

APPLIED FINISHES NOTES

- DULUX 'VIVID WHITE'. COLUMNS TO BE PAINTED FROM 1M. AFFL TO BEAM SOFFIT ABOVE. REFER TO 'PAINTING' WORK SECTION IN THE ARCHITECTURAL SPECIFICATION
- DULUX 'PLAY SCHOOL' P09.H9 SEMI-GLOSS. COLUMNS TO BE PAINTED FROM 1M. AFFL TO BEAM SOFFIT ABOVE. REFER TO 'PAINTING' WORK SECTION IN THE ARCHITECTURAL SPECIFICATION
- NOTE THAT WALLS WITHIN PLANT AND SERVICES ROOM AND CUPBOARDS WILL NOT BE PAINTED OR SEALED TO AVOID SURFACE DAMAGE AND PATCHING ISSUES DURING FUTURE WORKS.

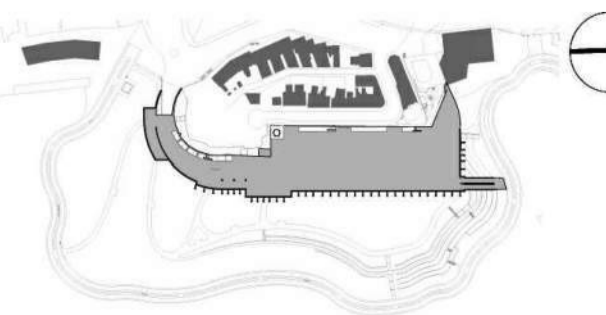
1 GENERAL ARRANGEMENT PLAN
GROUND RL 3.000 1:250

AS BUILT

Rev	App	Ckd	Revision or reason for issue	Date
X1	-	-	AS BUILT	20.07.15
X2	-	-	AC: WC BASIN CHANGED FROM CUBE EXT. TO CAROMA CARBONAT ACC. CONSULTS ROST	04.08.15
X3	-	-	AS BUILT - DRAWING SHEET FORMAT REPAIR	20.08.15

Rev	App	Ckd	Revision or reason for issue	Date
X1	-	-	AS BUILT	20.07.15
X2	-	-	AC: WC BASIN CHANGED FROM CUBE EXT. TO CAROMA CARBONAT ACC. CONSULTS ROST	04.08.15
X3	-	-	AS BUILT - DRAWING SHEET FORMAT REPAIR	20.08.15

Scales @ A1 Original
0m 5m 10m 20m
Scale 1:250 @ A1
NOTE:
ALL DRAWINGS TO BE READ IN CONJUNCTION WITH A-S3-0001 ARCHITECTURE LEGEND AND NOTES



DRAWN
DESIGNED
CHECKED
APPROVED

Consultant

Contractor

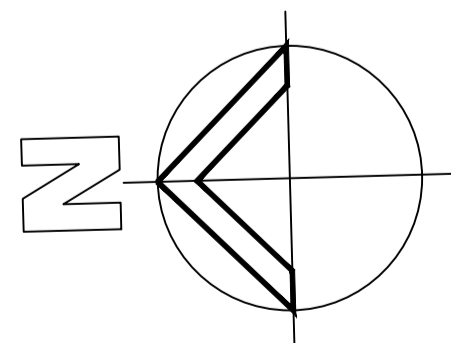


Boulderstone Pty Ltd
Trinity Business Campus Level 4
39 Delhi Rd
North Ryde NSW 2113 Australia
Telephone: +61 2 9935 7100
Facsimile: +61 2 9935 7080

Project Name
**BARANGAROO HEADLAND PARK
PUBLIC DOMAIN MAIN WORKS**
Barangaroo

Drawing Title
GROUND FLOOR PLAN
1:250
Project Number
1244
Drawing Number
A-S3-1103

Documentation Stage
AS BUILT
Revision
X3



AS BUILT

Drawing Title
RL13.000 LEVEL FLOOR PLAN

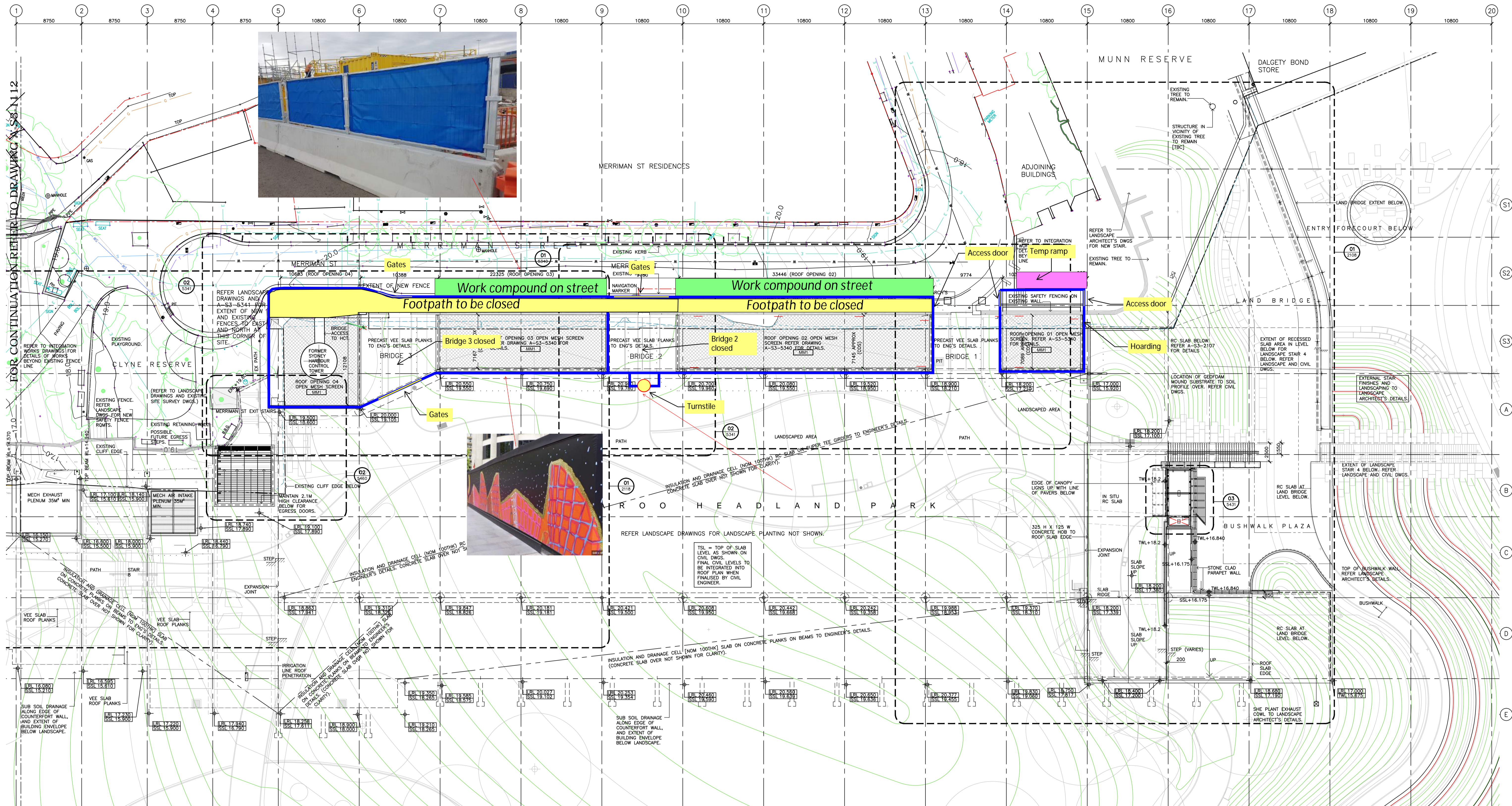
1:250

Project Number
1244

Drawing Number
A-S3-1105

Documentation Stage
AS BUILT


Revision
X2



NOTE:
FOR SURVEY INFORMATION REFER TO SITE SURVEY
BY RYGADE & COMPANY PTY LTD - REGISTERED
LAND SURVEYORS DATED 05/11/2012, DRAWING NO.
74238_D.

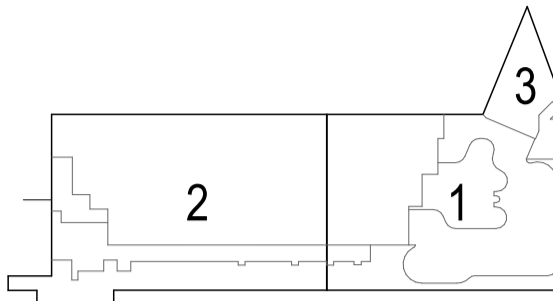
1 GENERAL ARRANGEMENT PLAN
LANDSCAPE RL 22.000 1:250

AS BUILT

Rev App Ckd Revision or reason for issue				Date	Rev App Ckd Revision or reason for issue	Date	Scales @ A1 Original		DRAWN GR		Contractor		Project Name		Drawing Title	
X1	CW	AK	AS BUILT - REVISION HISTORY DELETED	20.05.15				0m 5m 10m 20m	DESIGNED -				Baulderstone Pty Ltd		LANDSCAPE LEVEL PLAN	
X2	CW	AK	AS BUILT - REVISION HISTORY DELETED	04.08.15				Scale 1:250 @ A1	CHECKED CW		Trinit Business Campus Level 4		BARANGAROO HEADLAND PARK		1:250	
									APPROVED RW		39 Delhi Rd		PUBLIC DOMAIN MAIN WORKS		Project Number	
											North Ryde NSW 2113 Australia		Barangaroo		1244	
											Telephone: +61 2 9935 7100				Drawing Number	
											Facsimile: +61 2 9935 7080				A-S3-1107	
											www.baulderstone.com.au				Revision	
															AS BUILT	
															X2	
															Documentation Stage	

- General notes**
- All dimensions and existing conditions shall be checked and verified by the contractor before proceeding with the work.
 - All levels relative to Australian Height Datum.
 - Do not scale drawings.
 - Use figured dimensions only.

Legend



NOTES

DESIGN RESOLUTION

- The dimensions shown are general only and are subject to further design resolution.
- Ceiling RL (where shown) indicates general ceiling design level only.
- Location of plant, equipment and services on drawings is general and indicative, and does not include minor elements, such as vent pipes, flues, aerial, etc.

GRAPHIC PRESENTATION

- Colours presented on drawings are generic only and indicative of the architectural design intent. Some colour distortion may also occur in the printing process.

EXISTING STRUCTURES AND SERVICES

- Extent and location of existing structures and services is according to the available information and will all need to be verified on site at later stage.
- All existing SSL are subject to existing topping thickness confirmation.
- All unchanged existing site levels are as per the existing site conditions.
- Services slab penetrations shown are indicative and will require further coordination.

- NEW STRUCTURE
- NEW BLOCKWORK
- EXISTING STRUCTURE
- EXISTING BLOCKWORK
- HOLD - AREAS TBC / COORDINATED

GENERAL PROJECT CODES

- AFL Above Floor Level
- AHD Australian Height Datum
- AP# Access Panel - Type #
- ASSL Above Structural Slab Level
- AUTO Automatic Door
- BDY Boundary
- BGF Box Cutter - Type #
- BN# Bin - Type #
- BNG# Boom Gate
- BO# Bollard - Type #
- BR# Bump Rail - Type #
- BAL# Balustrade - Type #
- BYR# Bicycle Rack - Type #
- C-FR Column Fire rated to achieve 120/120/120
- CG# Corner Guard - Type #
- CL# Cladding - Type #
- CON# Concrete - Finish #
- CONP# Concrete Precast - Finish #
- CPH# Carpet - Type #
- CS# Cubicle System - Type #
- CT# Ceramic Tile - Type #
- CTS Centres (Setout)
- DF Door - ID #
- DATAE Data Outlet - External
- DCM# Dirt Control Mat - Type #
- DO# Drainage Outlet - Type #
- EXIT Exit Sign
- FCL Finished Ceiling Level
- FE# Fire Extinguisher - Type #
- FF Finished Face
- FFL Finished Floor Level
- PH Fire Hydrant
- FHR Fire Hose Reel
- FPL Finished Paving Level
- FTW Façade - Type #
- FW# Floor Waste - Type #
- GF# Grated Floor - Type #
- GPO General Purpose Outlet
- H# Handrail - Type #
- L# Lift - ID #
- LC# Locker - Type #
- LF# Light Fitting - Type #
- LV# Louvre - Type #
- P# Partition - Type # (Wall Code System only - e.
- PC# Paint Colour
- RF# Resilient Floor Finish - Type #
- ROF# Roofing - Type #
- RWO# Rain Water Outlet - Type #
- SC# Column - ID #
- SE# Seat - Type #
- SSL Structural Slab Level
- ST# Stone - Type #
- STR# Stair - ID #
- TGI# Tactile Ground Indicator - Type #
- VT# Vinyl Tile - Type #
- VU# Vanity Unit - Type #
- WPS# Waterproofing System - Type #

02	18/5/2023	Issue for 80% Tender Documentation	CHS
01	18/5/2023	Issue for Coordination	CHS

Rev	Date	Description	By	Chk
-----	------	-------------	----	-----

THE CUTAWAY
1 Merriman Str
Barangaroo NSW 2000

NLA Plans
Basement Level 1

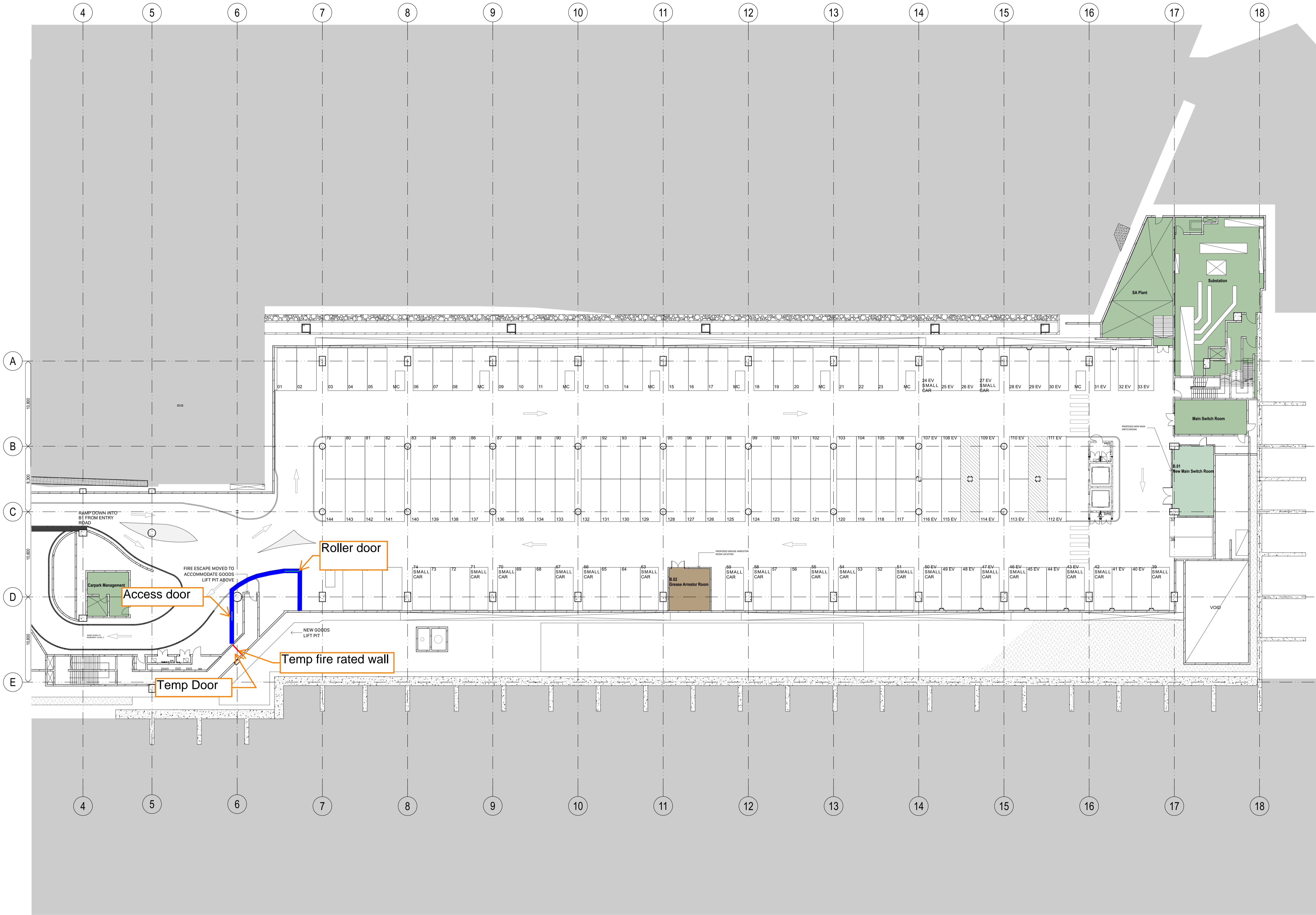
Scale
1:200 @ B1

Project Code
BCY

First Issued
18/5/2023

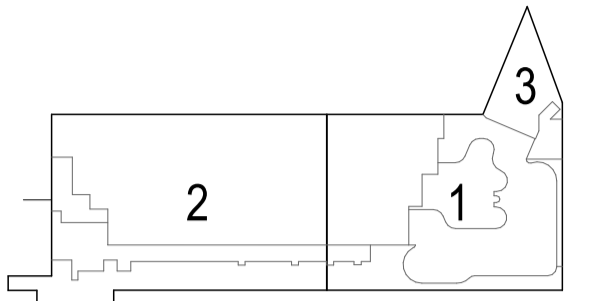
Sheet No.
29003

Rev
02



- General notes**
- All dimensions and existing conditions shall be checked and verified by the contractor before proceeding with the work.
 - All levels relative to Australian Height Datum.
 - Do not scale drawings.
 - Use figured dimensions only.

Legend



NOTES

DESIGN RESOLUTION

- The dimensions shown are general only and are subject to further design resolution.
- Ceiling RL (where shown) indicates general ceiling design level only.
- Location of plant, equipment and services on drawings is general and indicative, and does not include minor elements, such as vent pipes, flues, aerial, etc.

GRAPHIC PRESENTATION

- Colours presented on drawings are generic only and indicative of the architectural design intent. Some colour distortion may also occur in the printing process.

EXISTING STRUCTURES AND SERVICES

- Extent and location of existing structures and services is according to the available information and will all need to be verified on site at later stage.
- All existing SSL are subject to existing topping thickness confirmation.
- All unchanged existing site levels are as per the existing site conditions.
- Services slab penetrations shown are indicative and will require further coordination.

- NEW STRUCTURE
- NEW BLOCKWORK
- EXISTING STRUCTURE
- EXISTING BLOCKWORK
- HOLD - AREAS TBC / COORDINATED

GENERAL PROJECT CODES

- AFL Above Floor Level
- AHD Australian Height Datum
- AP# Access Panel - Type #
- ASSL Above Structural Slab Level
- AUTO Automatic Door
- BDY Boundary
- BGF Box Cutter - Type #
- BN# Bin - Type #
- BGM# Boom Gate
- BO# Bollard - Type #
- BPR# Bump Rail - Type #
- BAL# Balustrade - Type #
- BYR# Bicycle Rack - Type #
- C-FR Column Fire rated to achieve 120/120/120
- CG# Corner Guard - Type #
- CL# Cladding - Type #
- CLF Cladding - Finish #
- CON# Concrete Precast - Finish #
- CPH Carpet - Type #
- CS# Cubicle System - Type #
- CTW Ceramic Tile - Type #
- CTS Centres (Setout)
- DF Door - ID #
- DATAE Data Outlet - External
- DCM# Dirt Control Mat - Type #
- DS# Drainage Outlet - Type #
- EXIT Exit Sign
- FCL Finished Ceiling Level
- FE# Fire Extinguisher - Type #
- FF Finished Face
- FFL Finished Floor Level
- PH Fire Hydrant
- PHR Fire Hose Reel
- FPL Finished Paving Level
- FTW Façade - Type #
- FW# Floor Waste - Type #
- GF# Grated Floor - Type #
- GPO General Purpose Outlet
- HS# Handrail - Type #
- L# Lift - ID #
- LC# Locker - Type #
- LS# Light Fitting - Type #
- LV# Louvre - Type #
- P# Partition - Type # (Wall Code System only - e.
- RF# Resilient Floor Finish - Type #
- ROF# Roofing - Type #
- RWO# Rain Water Outlet - Type #
- SC# Column - ID #
- SE# Seat - Type #
- SSL Structural Slab Level
- ST# Stone - Type #
- STR# Stair - ID #
- TGI# Tactile Ground Indicator - Type #
- VT# Vinyl Tile - Type #
- VU# Vanity Unit - Type #
- WPS# Waterproofing System - Type #

02	18/05/2023	Issue for 80% Tender Documentation	CHS
01	18/05/2023	Issue for Coordination	CHS

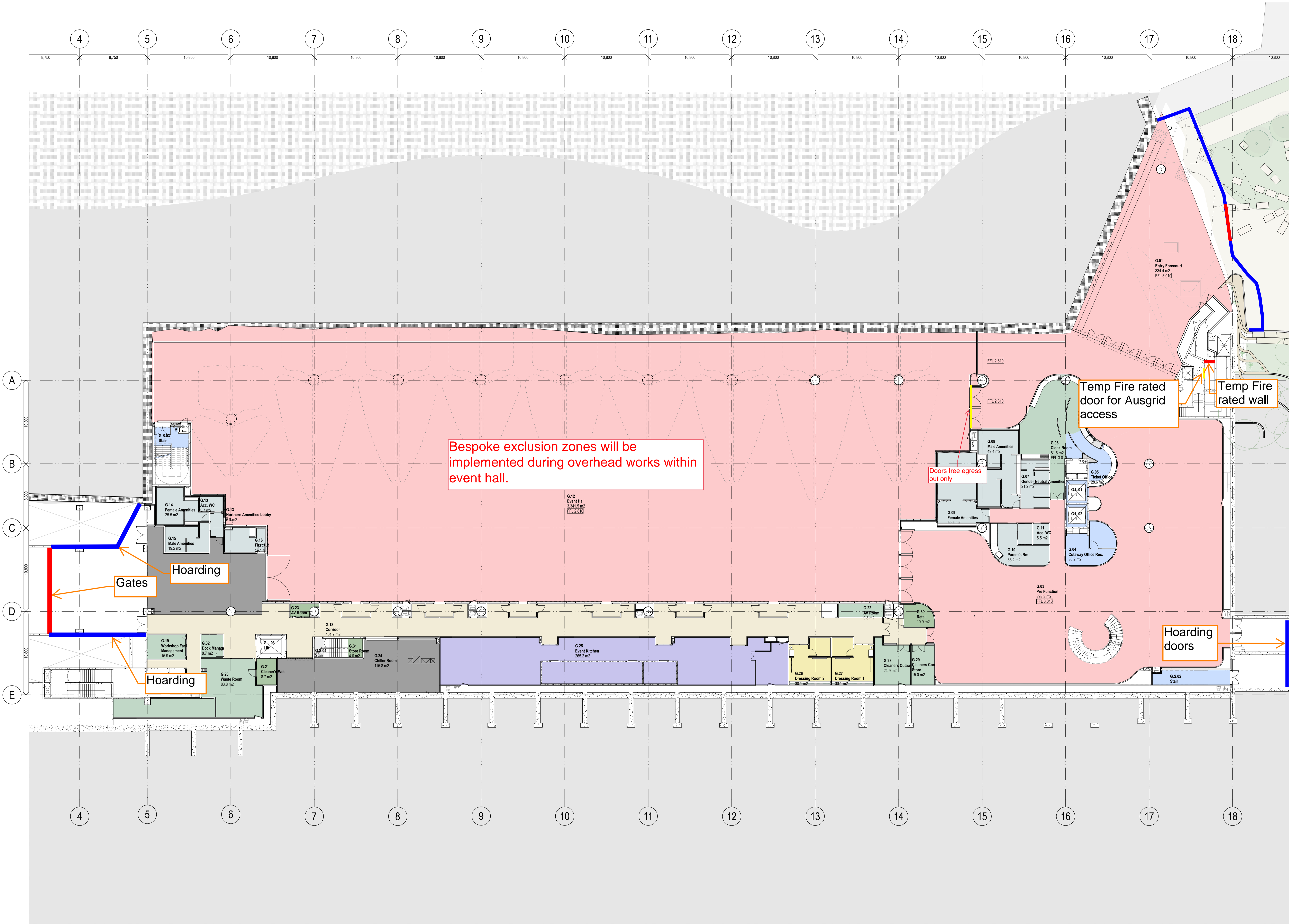
Rev	Date	Description	By	Chk
-----	------	-------------	----	-----

THE CUTAWAY
1 Merriman Str
Barangaroo NSW 2000

NLA Plans Scale
Ground Floor 1:200 @ B1

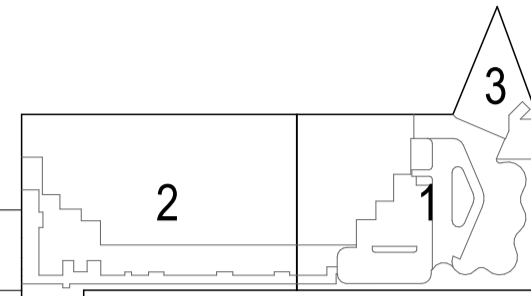
Project Code First Issued
BCY 18/5/2023

Sheet No. Rev
29000 02



- General notes**
- All dimensions and existing conditions shall be checked and verified by the contractor before proceeding with the work.
 - All levels relative to Australian Height Datum.
 - Do not scale drawings.
 - Use figured dimensions only.

Legend



NOTES

- DESIGN RESOLUTION**
- The dimensions shown are general only and are subject to further design resolution.
 - Ceiling RL (where shown) indicates general ceiling design level only.
 - Location of plant, equipment and services on drawings is general and indicative, and does not include minor elements, such as vent pipes, flues, aerial, etc.
- GRAPHIC PRESENTATION**
- Colours presented on drawings are generic only and indicative of the architectural design intent. Some colour distortion may also occur in the printing process.
- EXISTING STRUCTURES AND SERVICES**
- Extent and location of existing structures and services is according to the available information and will all need to be verified on site at later stage.
 - All existing SSL are subject to existing topping thickness confirmation.
 - All unchanged existing site levels are as per the existing site conditions.
 - Services slab penetrations shown are indicative and will require further coordination.

- NEW STRUCTURE**
- NEW BLOCKWORK**
- EXISTING STRUCTURE**
- EXISTING BLOCKWORK**
- HOLD - AREAS TBC / COORDINATED**

GENERAL PROJECT CODES

- AFL Above Floor Level
AHD Australian Height Datum
AP# Access Panel - Type #
ASSL Above Structural Slab Level
AUTO Automatic Door
BDY Boundary
BGF Box Gutter - Type #
BIN# Bin - Type #
BMG# Boom Gate
BOF Bollard - Type #
BPR# Bump Rail - Type #
BAL# Balustrade - Type #
BYR# Bicycle Rack - Type #
C-FR Column Fire rated to achieve 120/120/120
CG# Corner Guard - Type #
CL# Cladding - Type #
CON# Concrete - Finish #
CONP# Concrete Precast - Finish #
CPT# Carpet - Type #
CS# Cubicle System - Type #
CT# Ceramic Tile - Type #
CTS Centres (Setout)
DO# Door - ID #
DATE# Data Outlet - External
DCM# Dirt Control Mat - Type #
DOW# Drainage Outlet - Type #
EXIT Exit Sign
FCL Finished Ceiling Level
FE# Fire Extinguisher - Type #
FF# Finished Face
FPL Finished Floor Level
FH# Fire Hydrant
FHR Fire Hose Reel
FPL Finished Paving Level
FT# Façade - Type #
FW# Floor Waste - Type #
GF# Grated Floor - Type #
GPO General Purpose Outlet
HSE# Handrail - Type #
L# Lift - ID #
LC# Locker - Type #
LF# Light Fitting - Type #
LV# Louvre - Type #
P# Partition - Type # (Wall Code System only - e.
PC# Paint Colour
RF# Resilient Floor Finish - Type #
ROF# Roofing - Type #
RWOW# Rain Water Outlet - Type #
SC# Column - ID #
SE# Seat - Type #
SSL Structural Slab Level
ST# Stone - Type #
STR# Stair - ID #
TGI# Tactile Ground Indicator - Type #
VT# Vinyl Tile - Type #
VU# Vanity Unit - Type #
WPS# Waterproofing System - Type #



02	18/5/2023	Issue for 80% Tender Documentation	CHS
01	18/5/2023	Issue for Coordination	CHS

Rev	Date	Description	By	Chk
-----	------	-------------	----	-----

THE CUTAWAY
1 Merriman Str
Barangaroo NSW 2000

NLA Plans Scale
Level 1 1:200 @ B1

Project Code First Issued
BCY 18/5/2023

Sheet No. Rev
29001 02

- General notes**
- All dimensions and existing conditions shall be checked and verified by the contractor before proceeding with the work.
 - All levels relative to Australian Height Datum.
 - Do not scale drawings.
 - Use figured dimensions only.

Legend



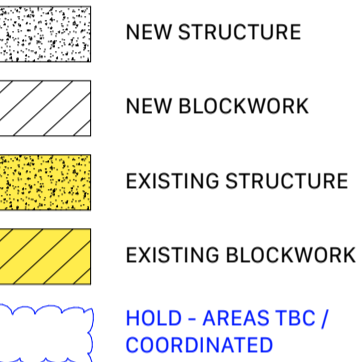
NOTES

DESIGN RESOLUTION

- The dimensions shown are general only and are subject to further design resolution.
- Ceiling RL (where shown) indicates general ceiling design level only.
- Location of plant, equipment and services on drawings is general and indicative, and does not include minor elements, such as vent pipes, flues, aerial, etc.

GRAPHIC PRESENTATION

- Colours presented on drawings are generic only and indicative of the architectural design intent. Some colour distortion may also occur in the printing process.
- EXISTING STRUCTURES AND SERVICES**
- Extent and location of existing structures and services is according to the available information and will all need to be verified on site at later stage.
- All existing SSL are subject to existing topping thickness confirmation.
- All unchanged existing site levels are as per the existing site conditions.
- Services slab penetrations shown are indicative and will require further coordination.



GENERAL PROJECT CODES

- AFL Above Floor Level
AHD Australian Height Datum
AP# Access Panel - Type #
ASSL Above Structural Slab Level
AUTO Automatic Door
BDY Boundary
BGF Box Gutter - Type #
BIN# Bin - Type #
BMG# Boom Gate
BOF Bollard - Type #
BRR# Bump Rail - Type #
BAL# Balustrade - Type #
BYR# Bicycle Rack - Type #
C-FR Column Fire rated to achieve 120/120/120
CG# Corner Guard - Type #
CL# Cladding - Type #
CON# Concrete - Finish #
CONP# Concrete Precast - Finish #
CPT# Carpet - Type #
CS# Cubicle System - Type #
CT# Ceramic Tile - Type #
CTS Centres (Setout)
D# Door - ID #
DATA# Data Outlet - External
DCM# Dirt Control Mat - Type #
DOW# Drainage Outlet - Type #
EXIT Exit Sign
FCL Finished Ceiling Level
FE# Fire Extinguisher - Type #
FF# Finished Face
FFL Finished Floor Level
FH# Fire Hydrant
FHR Fire Hose Reel
FPL Finished Paving Level
FT# Façade - Type #
FW# Floor Waste - Type #
GF# Grated Floor - Type #
GPO General Purpose Outlet
H# Handrail - Type #
L# Lift - ID #
LC# Locker - Type #
LF# Light Fitting - Type #
LV# Louvre - Type #
P# Partition - Type # (Wall Code System only - e.
PC# Paint Colour
RF# Resilient Floor Finish - Type #
ROF# Roofing - Type #
RWOW# Rain Water Outlet - Type #
SC# Column - ID #
SE# Seat - Type #
SSL Structural Slab Level
ST# Stone - Type #
STR# Stair - ID #
TGI# Tactile Ground Indicator - Type #
VT# Vinyl Tile - Type #
VU# Vanity Unit - Type #
WPS# Waterproofing System - Type #



02	18/5/2023	Issue for 80% Tender Documentation	CHS
01	18/5/2023	Issue for Coordination	CHS

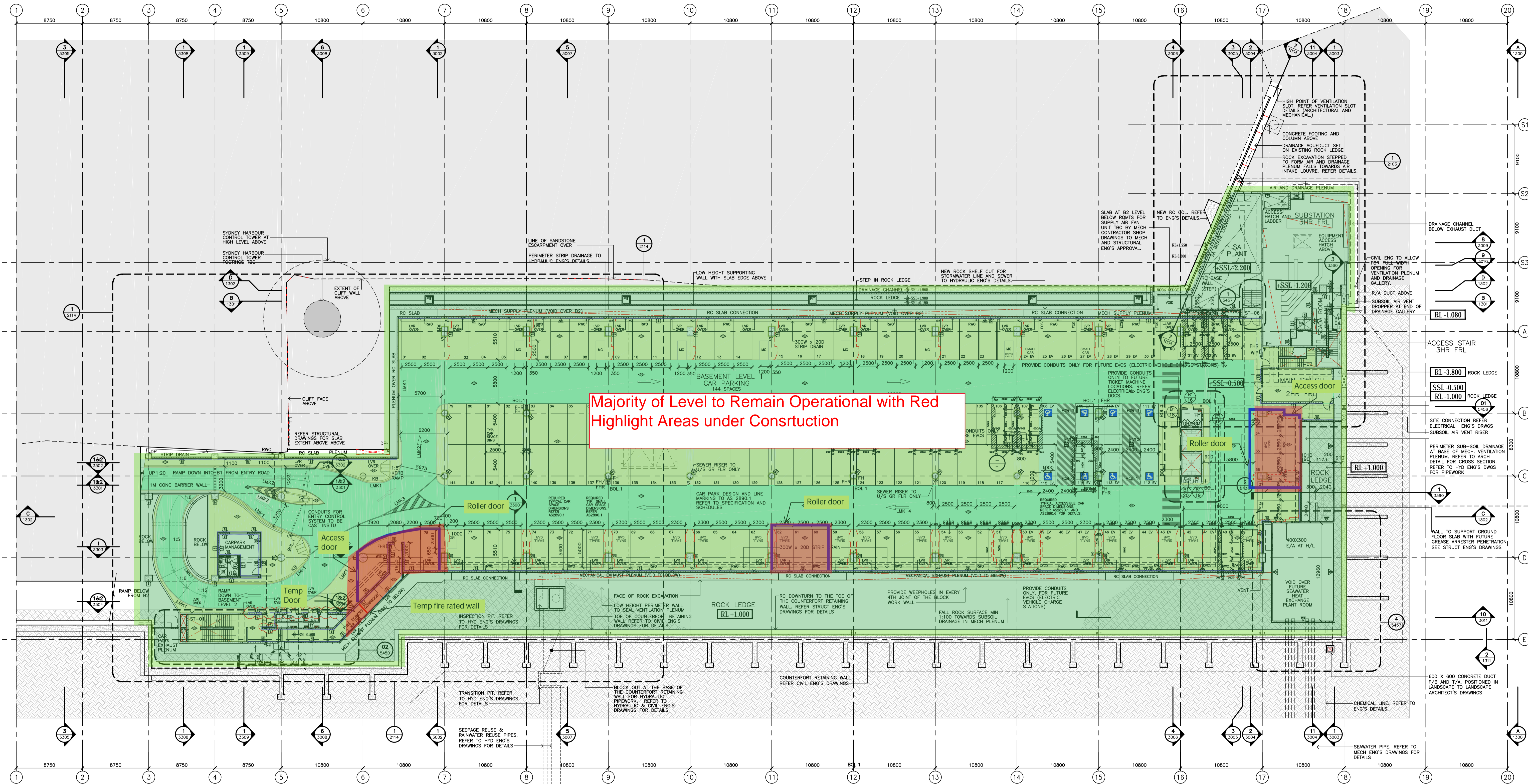
Rev	Date	Description	By	Chk
-----	------	-------------	----	-----

THE CUTAWAY
1 Merriman Str
Barangaroo NSW 2000

NLA Plans Scale
Level 2 1:200 @ B1

Project Code First Issued
BCY 18/5/2023

Sheet No. Rev
29002 02



Majority of Level to Remain Operational with Red Highlight Areas under Constuction

1 GENERAL ARRANGEMENT PLAN
BASEMENT 1 RL-0.5 1:250

CAR PARK NUMBERS

LEVEL B1:	115 STANDARD CAR SPACES 21 SMALL CAR SPACES 8 ACCESSIBLE CAR SPACES
144 CAR SPACES TOTAL	
LEVEL B2:	124 STANDARD CAR SPACES 32 SMALL CAR SPACES
156 CAR SPACES TOTAL	
LEVELS B1 & B2 TOTAL: 144 + 156 = 300 CAR SPACES STANDARD: 239 SMALL: 53 ACC: 8 TOTAL: 300 RATIO OF SMALL CAR SPACES TO TOTAL: 17.6%	

CAR PARK CLEARANCE STANDARD PARKING SPACE

Standard car parking space and clearance dimensions are based on the diagram in AS2890.1: 2004 Parking facilities Part 1: Off-street car parking. Figure 5.2 titled Design envelope around parked vehicle to be kept clear of columns, walls and obstructions. Refer setout diagram below.

CAR PARK CLEARANCE SMALL CAR SPACE

The small car parking space and clearance dimensions are based on VMK's interpretation of the diagram in AS2890.1: 2004, Figure 5.2, proportionately reduced to match the AS2890.1 clause 2.4.1 (a)(ii)(A) dimensions for a small car space. Refer to setout diagram below.

LEGEND FOR MAIN LEGEND REFER TO A-S3-0001

LMK 1 CAR PARK BAY LINE MARKING AND ROADWAY EDGE MARKING
LMK 2 TRAFFIC DIRECTION ARROWS
LMK 3 HAZARD MARKING
LMK 4 CAR PARK BAY LETTERING

NOTE: ALL LINE MARKING TO CIVIL ENGINEER'S DOCUMENTATION

UNOBSTRUCTED MINIMUM HEIGHT ABOVE PATH TO ACCESSIBLE CAR SPACES: 2.3M CLEAR
UNOBSTRUCTED MINIMUM HEIGHT ABOVE ACCESSIBLE PARKING SPACES: 2.5M CLEAR

NOTE:

- REFER TO DRAWING No. A-S3-5500 FOR WALL TYPE SCHEDULE AND WALL LINING DETAILS.
- REFER TO DETAIL AREA PLANS FOR DOOR, WINDOW AND LOUVER NUMBERS WHERE NOT INDICATED.
- READ DRAWING IN CONJUNCTION WITH A-S3-1101 AND A-S3-1103, SPECIFICATION AND SCHEDULES, AND ARCHITECTURAL CONCRETE SETOUT DRAWINGS.
- REFER TO 'PAINTING' WORK SECTION IN THE ARCHITECTURAL SPECIFICATION.

APPLIED FINISHES AND EXTENTS:

- NO FINISH TO WALL
- PENETRATING INVISIBLE FINISH CONCRETE SEALER. REFER 'PAINTING' WORK SECTION IN THE ARCH. SPEC.
- DULUX 'VIVID WHITE' REFER 'PAINTING' WORK SECTION IN THE ARCHITECTURAL SPEC.
- DULUX 'LAIRD' P20.E9 SEMI-GLOSS.
- PENETRATING INVISIBLE FLOOR SEALER. REFER 'PAINTING' WORK SECTION. INCLUDES DRIVEWAY CIRCULATION AREAS. NOTE SLIP RESISTANCE REQUIREMENTS.
- NO FINISH TO FLOOR

APPLIED FINISHES NOTES

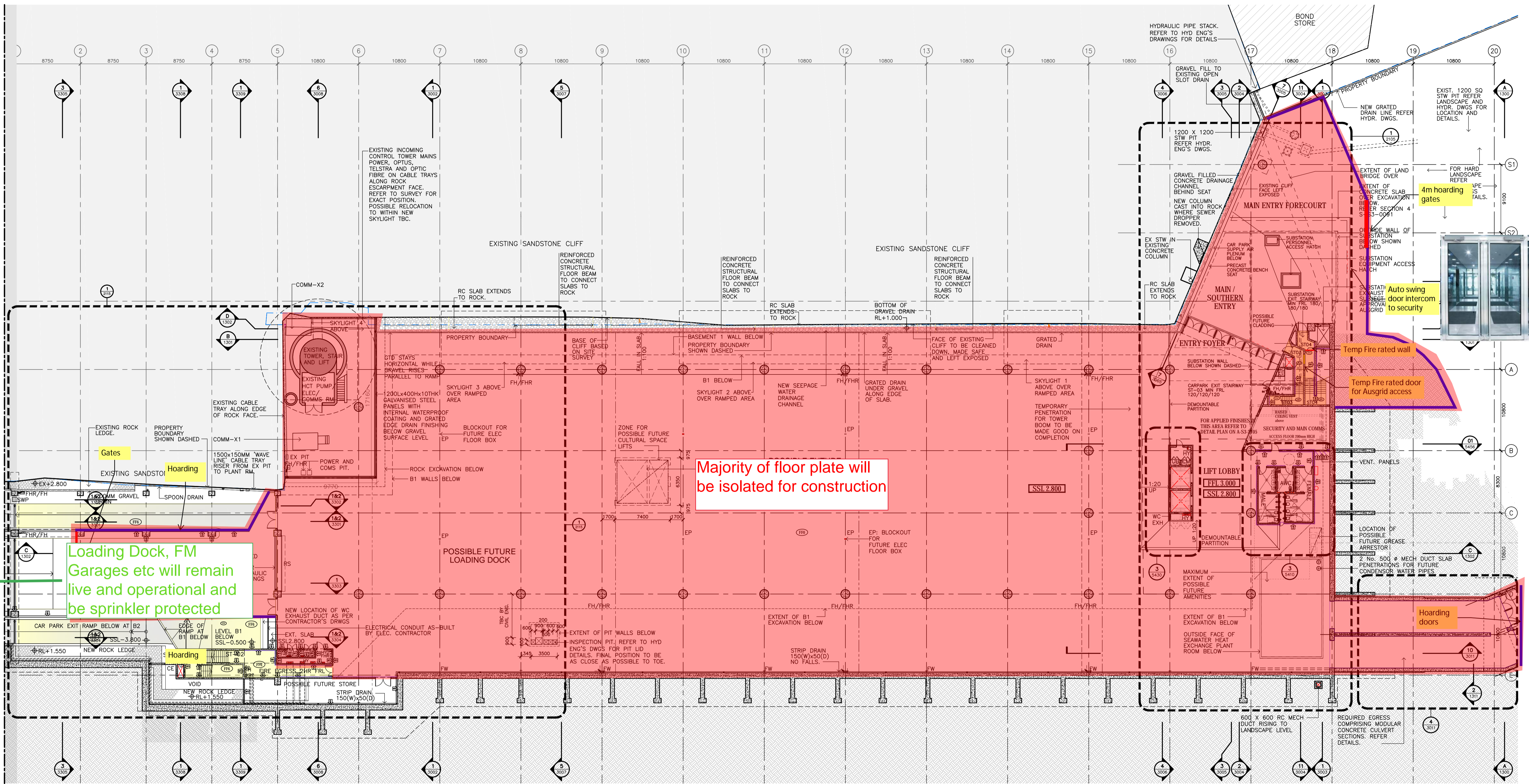
DULUX 'VIVID WHITE' TO ALL CONCRETE BLOCK WALLS. ENSURE FILM BUILD THICKNESS AND FULL COVERAGE IS ACHIEVED. COLUMN ID LETTERS - COLOUR - VIVID WHITE WHITE.

DULUX 'LAIRD' P20.E9 SEMI-GLOSS. COLUMNS TO BE PAINTED FROM 1M AFFL TO BEAM SOFFIT ABOVE. REFER TO 'PAINTING' WORK SECTION IN THE ARCHITECTURAL SPECIFICATION.

NOTE THAT WALLS WITHIN PLANT AND SERVICES ROOM AND CUPBOARDS WILL NOT BE PAINTED OR SEALED.

AS BUILT

FOR CONTINUATION REFER TO DRAWING A-S3-1111



LEGEND:

B1	BASEMENT LEVEL ONE
CE	CAR PARK EXHAUST
D	DEPTH
EP	ELECTRICAL FLOOR BOX CONNECTION POINT. REFER ELEC. ENG'S DRAWINGS.
FHR	FIRE HOSE REEL. REFER TO HYDRAULIC ENG'S DRAWINGS
FH	FIRE HYDRANT. REFER TO HYDRAULIC ENG'S DRAWINGS
FFL	FINISHED FLOOR LEVEL
FW	FLOOR WASTE
RS	ROLLER SHUTTER
SSL	STRUCTURAL SLAB LEVEL
W	WIDTH
WC	TOILET (WATER CLOSET)

DRAWING KEY:

NEW FILLO CIVIL ENGINEER'S DWGS.
EXISTING ROCK

NOTE:

- REFER TO DRAWING No. A-S3-5500 FOR WALL TYPE SCHEDULE AND WALL LINING DETAILS.
- REFER TO DETAIL AREA PLANS FOR DOOR, WINDOW AND LOUVER NUMBERS WHERE NOT INDICATED.
- READ DRAWING IN CONJUNCTION WITH A-S3-1101 AND A-S3-1103. SPECIFICATION AND SCHEDULES, AND ARCHITECTURAL CONCRETE SETOUT DRAWINGS.
- REFER TO 'PAINTING' WORK SECTION IN THE ARCHITECTURAL SPECIFICATION.

APPLIED FINISHES AND EXTENTS:

REFER 'PAINTING' WORK SECTION IN THE ARCHITECTURAL SPEC. FOR APPLIED FINISHES.

PENETRATING INVISIBLE FINISH CONCRETE SEALER.

FFB	NO FINISH TO FLOOR
WF1	NO FINISH TO WALL
WF2	DULUX 'VIVID WHITE'. REFER 'PAINTING' WORK SECTION IN THE ARCHITECTURAL SPEC.
FF6	DULUX 'LAIRD' P20E9 SEMI-GLOSS.
FF7	DULUX 'PLAY SCHOOL' P09.H9 SEMI-GLOSS.

APPLIED FINISHES NOTES

DULUX 'VIVID WHITE'. COLUMNS TO BE PAINTED FROM 1M. AFFL TO BEAM SOFFIT ABOVE. REFER TO 'PAINTING' WORK SECTION IN THE ARCHITECTURAL SPECIFICATION

DULUX 'PLAY SCHOOL' P09.H9 SEMI-GLOSS. COLUMNS TO BE PAINTED FROM 1M. AFFL TO BEAM SOFFIT ABOVE. REFER TO 'PAINTING' WORK SECTION IN THE ARCHITECTURAL SPECIFICATION

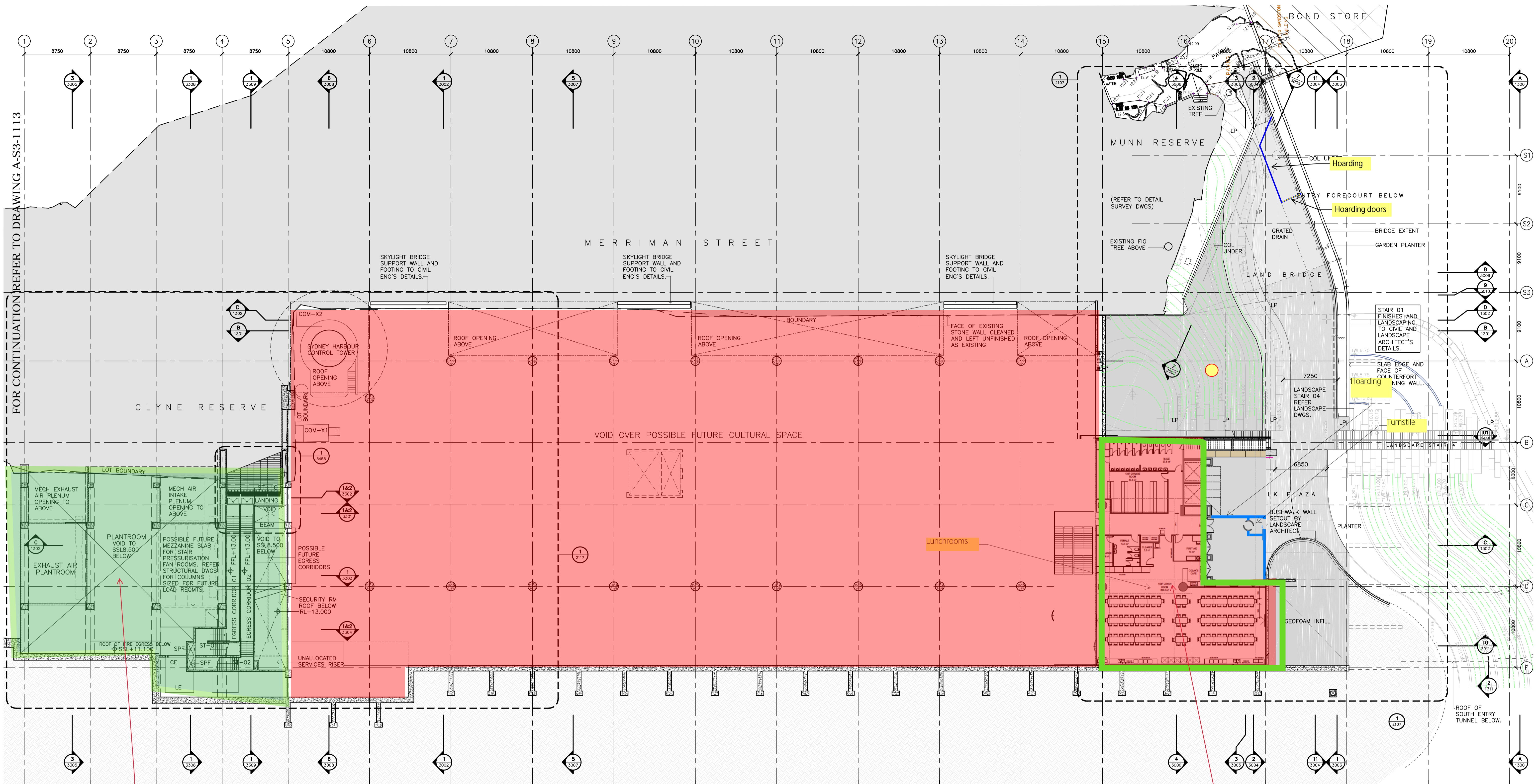
NOTE THAT WALLS WITHIN PLANT AND SERVICES ROOM AND CUPBOARDS WILL NOT BE PAINTED OR SEALED TO AVOID SURFACE DAMAGE AND PATCHING ISSUES DURING FUTURE WORKS.

GENERAL ARRANGEMENT PLAN

GROUND RL 3,000

1:250

AS BUILT



Operational Plant rooms will be left sprinkler protected during construction

Lunchrooms will be protected by Thermal Detectors

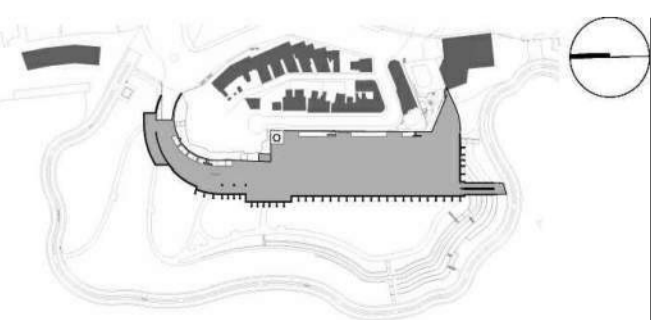
1 GENERAL ARRANGEMENT PLAN
- RL 13.00 LEVEL
1:250

AS BUILT

Rev	App	Ckd	Revision or reason for issue	Date
X1			AS BUILT	27.05.15
X2			DELETED REVISION HISTORY	05.08.15

Rev	App	Ckd	Revision or reason for issue	Date

Scales @ A1 Original
0m 5m 10m 20m
Scale 1:250 @ A1
NOTE:
ALL DRAWINGS TO BE READ IN
CONJUNCTION WITH A-S3-0001
ARCHITECTURE LEGEND AND NOTES



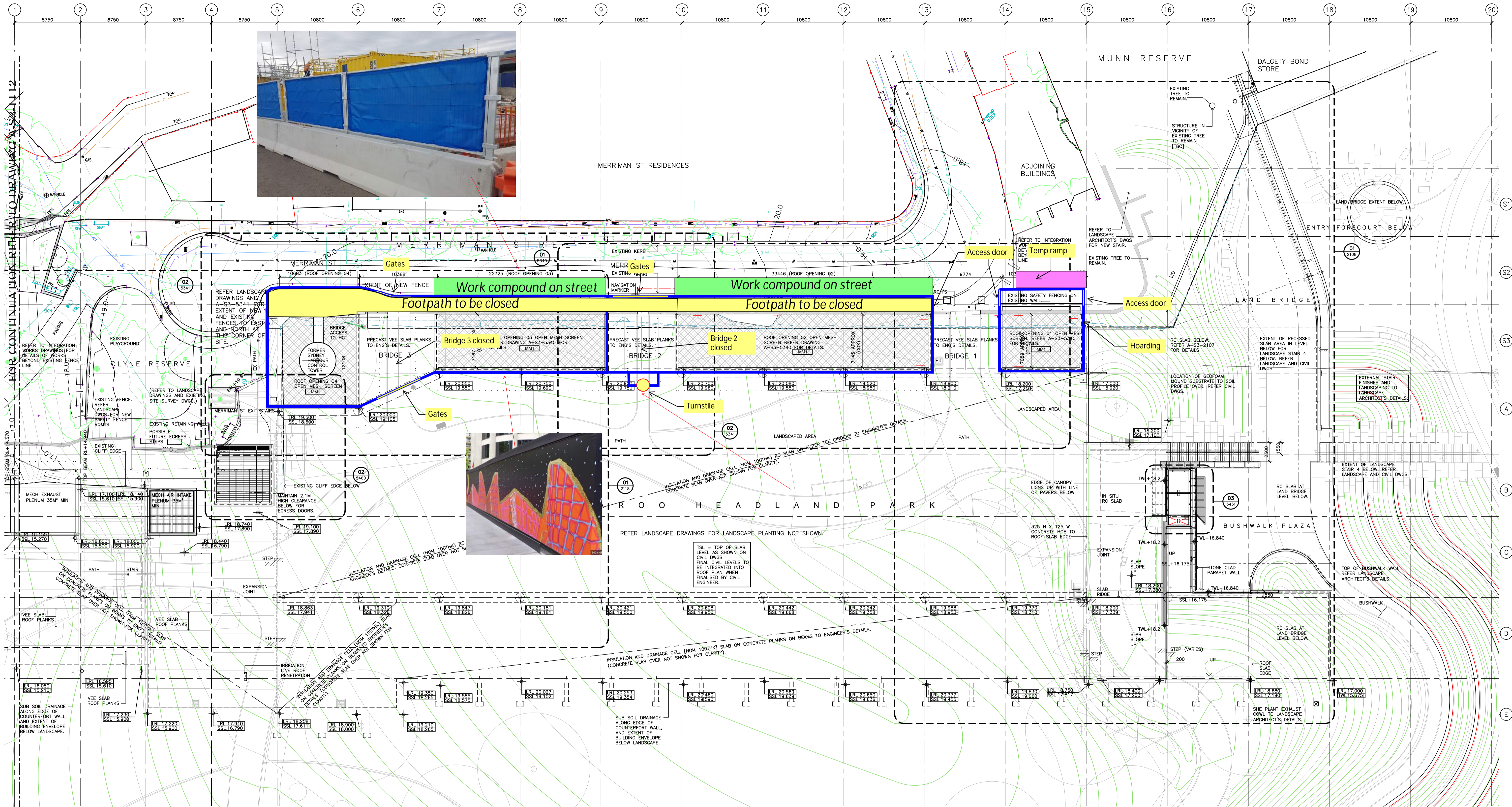
DRAWN
DESIGNED
CHECKED
APPROVED

Contractor
Boulderstone Pty Ltd
Trinity Business Campus Level 4
39 Delhi Rd
North Ryde NSW 2113 Australia
Telephone: +61 2 9935 7100
Facsimile: +61 2 9935 7080
www.boulderstone.com.au

Project Name
**BARANGAROO HEADLAND PARK
PUBLIC DOMAIN MAIN WORKS**
Barangaroo

Drawing Title
RL13.000 LEVEL FLOOR PLAN
1:250
Project Number
1244
Drawing Number
A-S3-1105

Documentation Stage
AS BUILT
Revision
X2



NOTE:
FOR SURVEY INFORMATION REFER TO SITE SURVEY
BY RYGADE & COMPANY PTY LTD - REGISTERED
LAND SURVEYORS DATED 05/11/2012, DRAWING NO.
74238_D.

1 GENERAL ARRANGEMENT PLAN
LANDSCAPE RL 22.000 1:250

AS BUILT